

WeatherTech®

No-Drill MudFlap

Installation Instructions

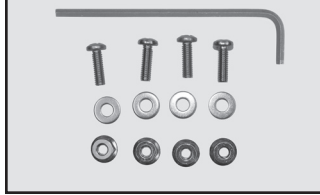
Thank you for purchasing the WeatherTech® No-Drill MudFlap. Please read this installation guide to thoroughly familiarize yourself with the steps to install the MudFlap on your vehicle. When properly installed, the WeatherTech® No-Drill MudFlap will provide you with years of protection.

Tools Needed



- Phillips Screwdriver (stubby preferred)
- Small Flathead Screwdriver
- Razor Knife
- 7/16" Box End Wrench

Hardware



Parts Kit (M)

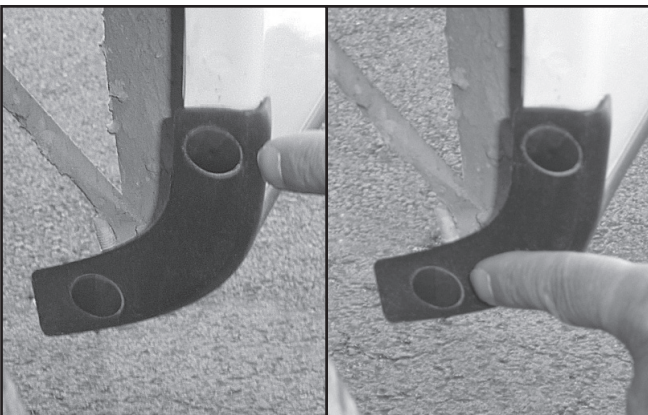
- (1) 5/32" Hex Key
- (4) 12 x 24 x 3/4" Machine Screws
- (4) 12 x 24 Serrated Locknuts
- (4) Washers

⚠ WARNING ⚠

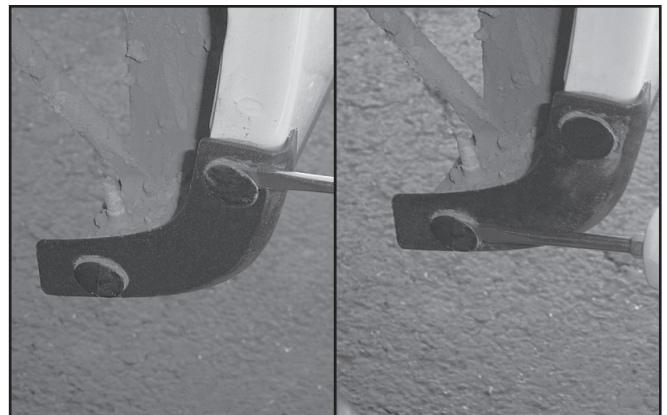
The MudFlap is designed to fit vehicles with standard size wheels and tires. Installation of MudFlaps on vehicles with aftermarket wheels or oversize tires may interfere with the MudFlap, will void the warranty and may damage the MudFlap or the vehicle.

- 1 Start by thoroughly washing your vehicle. Take care to remove all dirt, debris, and stains from each fender in the areas corresponding to where the MudFlaps will be installed.

- 2 Begin driver's side MudFlap installation by parking the vehicle on level ground. Identify the driver's side MudFlap by locating the "LH" mark located centrally in the recessed cavity on the tire side of the MudFlap.



- 3 Locate the (2) fasteners holding the plastic fender guard to the fender.



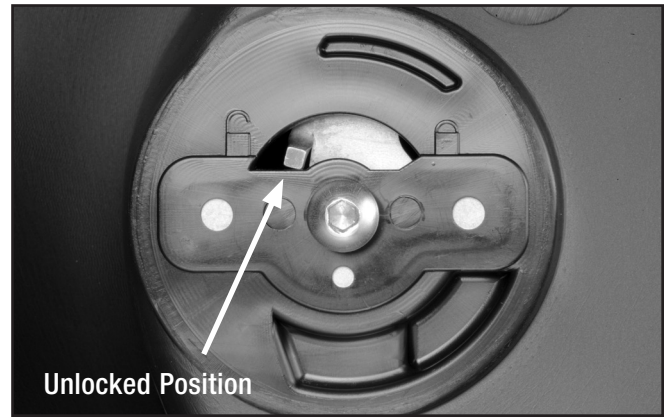
- 4 With the small flat blade screwdriver, pry up the heads of the two plastic rivets.

[View Easy Installation Video](#)
WeatherTech.com/install

Questions? Call customer service at 630 769 1500
Monday - Friday: 9 a.m. to 5 p.m. Central Time



5 Using the razor knife, cut off the heads of each plastic rivet.

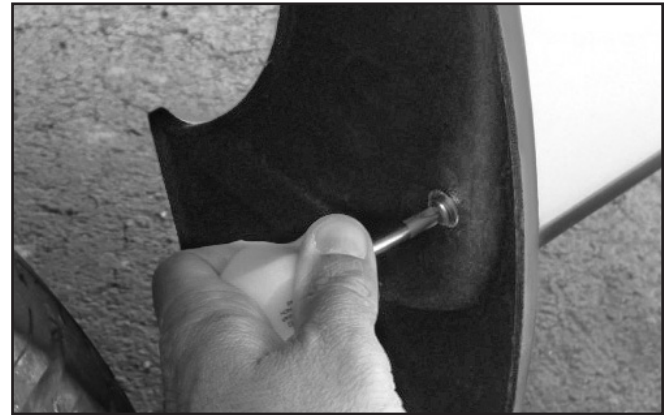


Unlocked Position

6 Inspect the MudFlap marked LH, and ensure that the QuickTurn™ fastener is in the unlocked position.



7 Place the MudFlap on the fender, lining up the holes in the MudFlap with the holes in the fender. Install the (2) screws and washers thru the MudFlap and thru the fender holes with the nuts on back.



8 While pressing on the MudFlap to ensure a tight fit between the MudFlap and fender, tighten the screws.



9 Using the supplied hex key, tighten the QuickTurn™ fastener. The QuickTurn™ fastener will rotate to the locked position, continue tightening the fastener until it is firmly grabbing the fender lip. Repeat for the passenger side Steps 3-9.

Congratulations!



**Your new
WeatherTech®
No-Drill
MudFlaps have
been installed!**

Your WeatherTech® No-Drill MudFlap carries a Lifetime Warranty against defects in materials and workmanship when installed correctly.

[View Easy Installation Video](#)
[WeatherTech.com/install](#)

Questions? Call customer service at 630 769 1500
Monday - Friday: 9 a.m. to 5 p.m. Central Time