

# WeatherTech®

## No-Drill MudFlap

### Installation Instructions

Thank you for purchasing the WeatherTech® No-Drill MudFlap. Please read this installation guide to thoroughly familiarize yourself with the steps to install the MudFlap on your vehicle. When properly installed, the WeatherTech® No-Drill MudFlap will provide you with years of protection.

#### Tools Needed



- Phillips screwdriver
- Allen wrench (included)
- Drive socket set
- Car trim clip remover (optional)
- Razor knife

#### Hardware

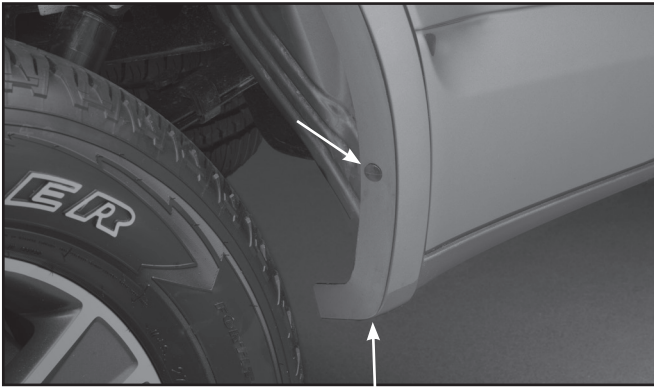


- (2) long black hex head bolts
- (2) short phillips head bolts
- (2) lock nuts
- (2) plastic spacer washers
- (2) pieces of black film
- (4) metal washers - (2) black & (2) aluminum

#### ⚠ WARNING ⚠

The MudFlap is designed to fit vehicles with standard size wheels and tires. Installation of MudFlaps on vehicles with aftermarket wheels or oversize tires may interfere with the MudFlap, will void the warranty and may damage the MudFlap or the vehicle.

**1** Start by thoroughly washing your vehicle. Take care to remove all dirt, debris and stains from each fender in the areas corresponding to where the MudFlaps will be installed.

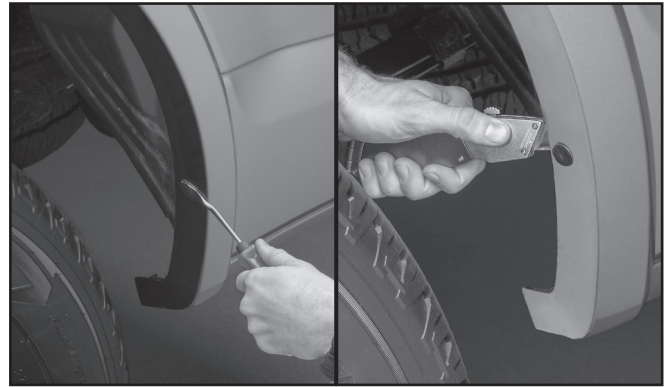


**3** Locate the (2) factory fasteners indicated - (1) plastic rivet and (1) mounting bolt.



**5** Remove the lower mounting bolt using the appropriate socket.

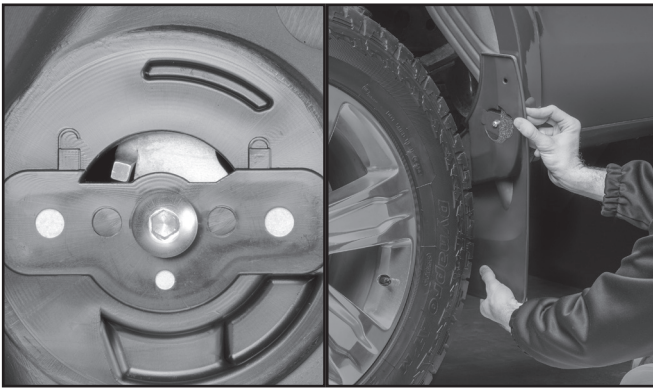
**2** Begin driver's side MudFlap installation by parking the vehicle on level ground.



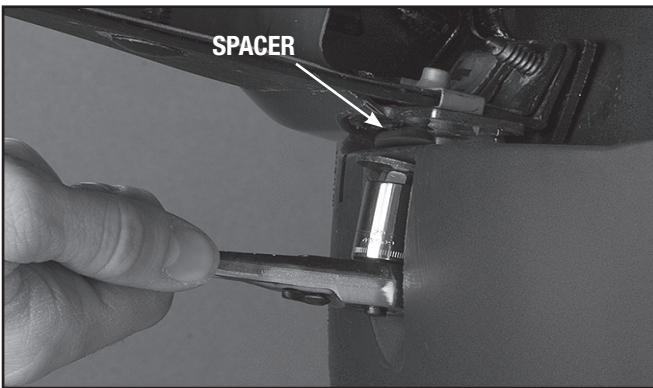
**4** If available, use a car trim clip tool to remove the plastic rivet. A razor knife can also be used by cutting and removing the rivet from behind the fender.



**6** Apply the black film that corresponds to the right or left side onto the wheel well lip.



**7** Using the MudFlap marked “LH”, ensure the QuickTurn™ fastener is in the unlocked position. Place the MudFlap up to the fender and align with the corresponding holes.



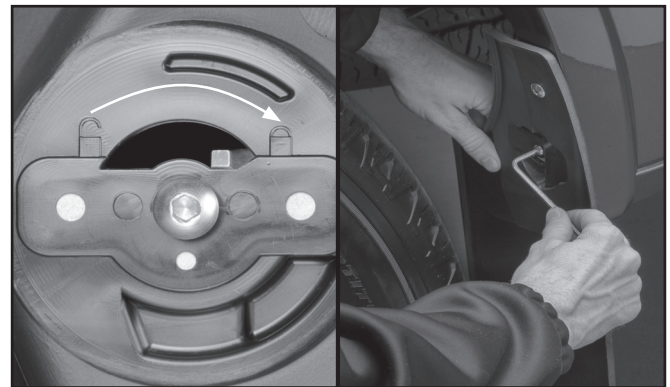
**9** Place the plastic spacer washer between the MudFlap and the bottom of the fender. Insert a long black hex head bolt through a black metal washer and attach the bolt loosely using the appropriate socket.



**11** After tightening the QuickTurn™ fastener, fully tighten the top and bottom mounts. (Do not overtighten)



**8** Using a short phillips head bolt, aluminum washer, and lock nut attach the MudFlap loosely to the top mounting location. The washer is to be placed under the locknut.



**10** While pressing the MudFlap against the fender, rotate the QuickTurn™ fastener with the allen wrench; the fastener will rotate to the “lock” position. Continue turning allen wrench to fully tighten.

**12** Install the passenger side MudFlap marked (RH) by, repeating steps 3-11.

## Congratulations!

Your new WeatherTech®

**No-Drill MudFlaps have been installed!**

Your WeatherTech® No-Drill MudFlap carries a Lifetime Warranty against defects in materials and workmanship when installed correctly.

[View Easy Installation Video](#)

[WeatherTech.com/install](http://WeatherTech.com/install)

**Questions? Call customer service at (630) 769-1500**

**Monday - Thursday: 7 a.m. to 11 p.m. Central**

**Friday: 7 a.m. to 10 p.m. Central**

**Saturday - Sunday: 8 a.m. to 8 p.m. Central**