



INSTALL INSTRUCTIONS FOR 75-5168



PRINT

BEFORE YOU START

Please read the entire product guide before proceeding.
Ensure all parts are present.

If you are missing any of the components, call our customer support at (909) 947-0015.

Do not work on your vehicle while the engine is hot.

Make sure the engine is turned off and the vehicle is in Park and the Parking Brake is set.

S&B FILTERS recommends that you keep your OE intake system in the event it is required in the future.

In order to maintain your warranty, all connections and components must be checked periodically for alignment and for proper tension on all connections. Failure to do so may void your warranty.

Use only S&B FILTERS cleaning and oil products to service your filter. Using any other brand oil and or cleaners on your S&B air filter may void your warranty

PERIODICALLY (DURING EACH ENGINE OIL CHANGE) CHECK THE FOLLOWING

- Intake Tube (11) and Filter (7) connections and Intake Box (1) fasteners making sure they are tight.
- All electrical connections and wire harnesses moved during the installation of the intake and make sure they are secure and away from any hot or moving components.
- Check for any signs of abrasion or wear and tear on the intake tube, box, filter, and electrical harnesses moved or near the intake and repair/replace as necessary.

REQUIRED TOOLS

7mm, 8mm, and 10mm, Socket and 1/4" Drive Wrench

7mm Deep Socket

3" Socket Extension

6" Socket Extension or 3" + 3" Socket Extensions

3/4" Open/Box Combination Wrench

5/16" Nut Driver

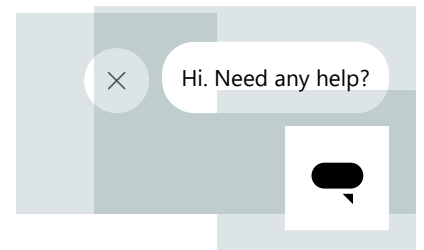
Panel Popper

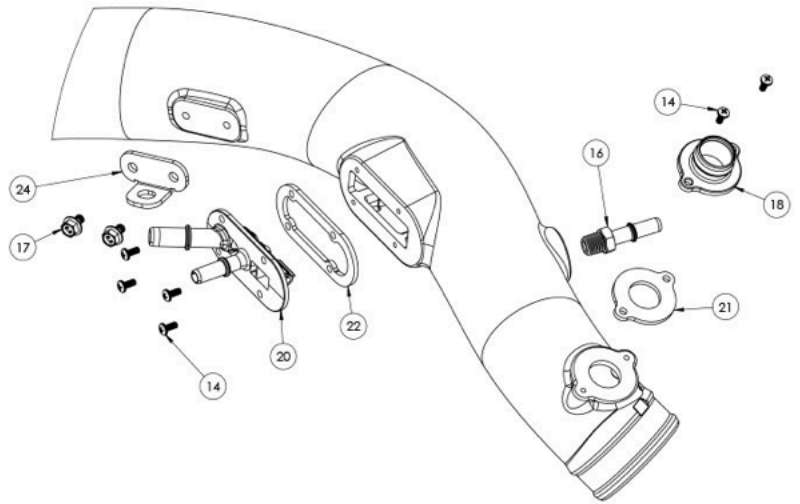
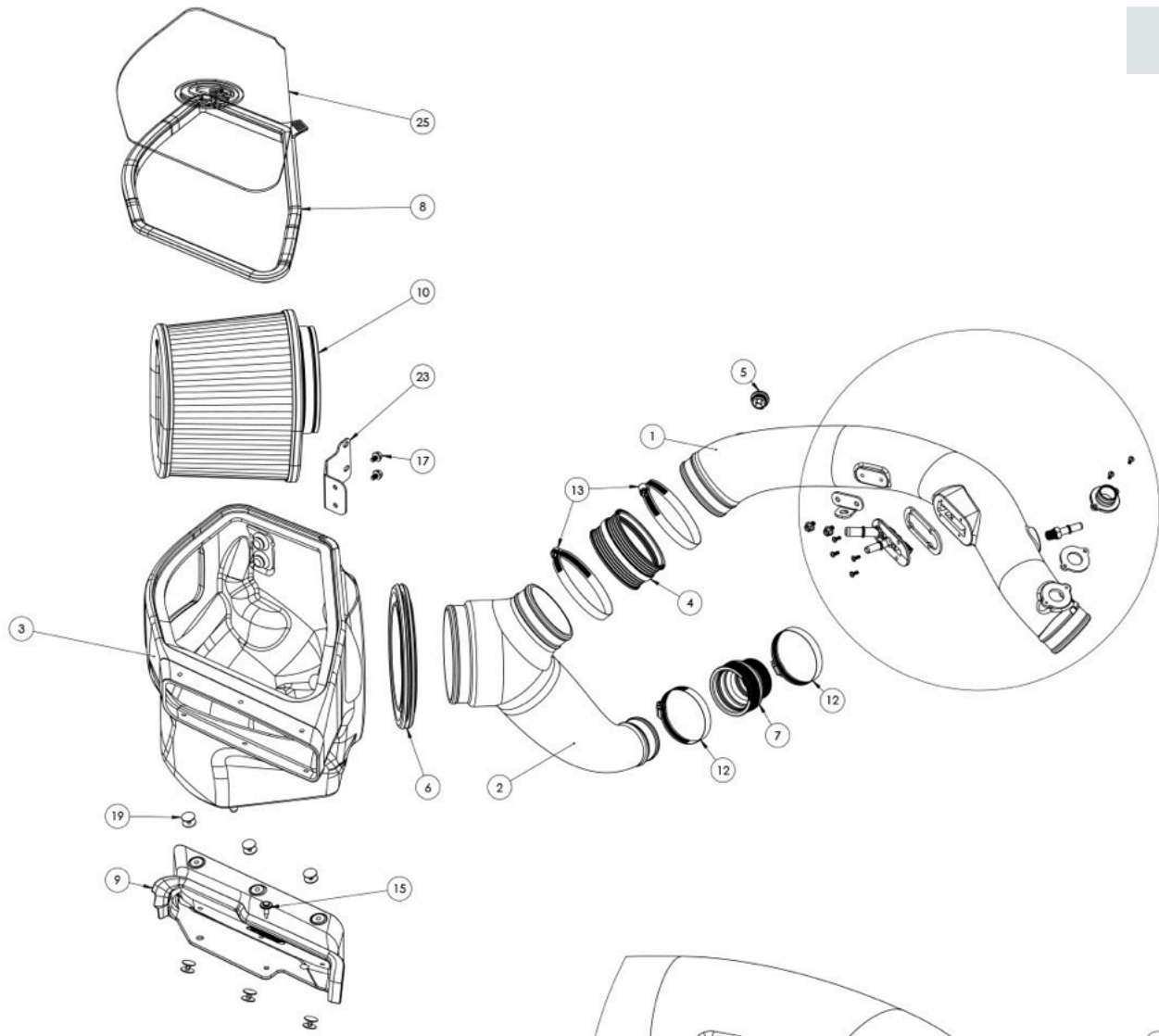
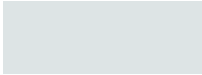
Phillips Screwdriver

Wire Cutters

Adjustable Pliers

Note: Approximate Install Time: 1 Hr





ITEM NO.	PART NUMBER	DESCRIPTION	QTY.
1	AL1440-00	Intake Tube	1
2	AL1440A-00	Intake Tube, Y-Tube	1
3	AL1440B-00	Air Box	1
4	AI1129C-00	Straight Coupler, 3.75" ID	1
5	AI1948C-00	IAT Sensor Adapter, Silicone	1
6	AI2470C-00	Tube Seal	1
7	AI2903C-00	Step Coupler, Hump, 2.5" x 1.9"	1
8	AI2913C-00	Snap-In Lid Seal	1
9	AI2914C-00	Silicone Front Scoop	1
10	KF-1062	Air Filter	1
11	AG1004-00	Hose Clamp #36	1
12	AG1006-00	Hose Clamp #44	1
13	AG1018-00	Hose Clamp #64	2
14	AI1639-00	Screw, #8-32 x 3/8" Long, 18-8 SS	6
15	AI1763-00	Plastic Rivet	1
16	AI1776-01	Quick Connect, 3/8 Dia x 1/4 NPT	1
17	AI2452-00	Hex Flange Bolt, M6x1x10mm	4
18	AI2787-00	Adapter, Bypass Valve	1
19	AI2788-00	Plastic Rivet, Blk, Nylon	12
20	AI2835-00	Dual Quick Connect	1
21	AI2838-00	Gasket, Bypass Valve	1
22	AI2839-00	Gasket, Quick Connect	1
23	AI2915-01	Mounting Bracket, Air Box	1
24	AI2916-01	Mounting Bracket, Tube	1
25	AI2985-00	Clear Lid	1

STEP 1

Loosen the 3 hose clamps that are attached to the long upper intake tube.



STEP 1 (IMAGE 2)



STEP 2

Disconnect the 3 quick connect fittings.



STEP 3

Remove the screw shown in the picture with a 5/16 nut driver or socket.



STEP 4

Disconnect the IAT sensor harness.



STEP 5

Disconnect the hose from the stock intake tube by squeezing the clamp.



STEP 6

Remove the stock intake tube from the vehicle.



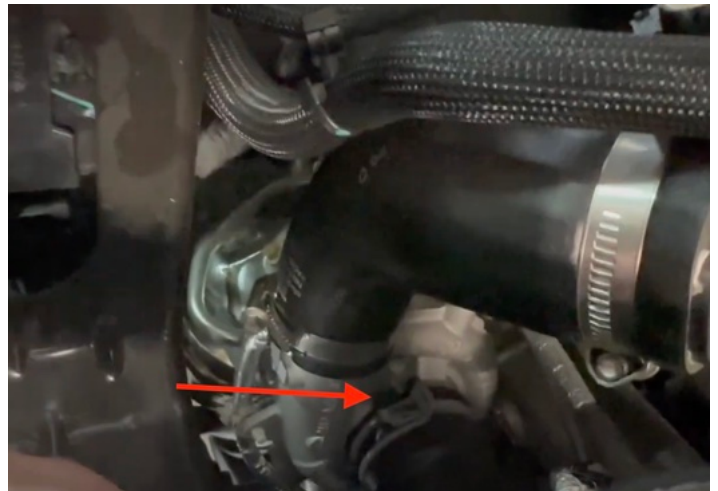
STEP 7

Remove the push rivet that is securing down the front inlet then remove the intake from the vehicle.



STEP 8

Squeeze the constant tension band clamp to remove the intake tube connected to the lower turbo.



STEP 9

Install the dual quick connect fitting and gasket on the S&B intake tube then tighten down with the provided hardware.



STEP 10

Install the gasket then the plastic bypass valve adaptor onto the tube.



STEP 11

Install the IAT sensor grommet onto the S&B tube, make sure the tab lines up with the notch on the tube.



STEP 12

Install the IAT sensor onto the S&B tube, make sure the tab backs up against the ramp as shown in the picture.



STEP 13

Install the bracket onto the tube then tighten down.



STEP 14

Install the tube seal onto the S&B airbox.



STEP 15

Install the bracket onto the S&B airbox, then tighten down with the provided hardware.



STEP 16

Install the silicone scoop seal using the provided push rivets.



STEP 17

Install the quick connect fitting onto the S&B tube.



STEP 18

Remove the two bolts shown in the picture. Put them aside because we will use them later.



STEP 19

Drop in the S&B airbox then secure it down using the bolts you just removed.

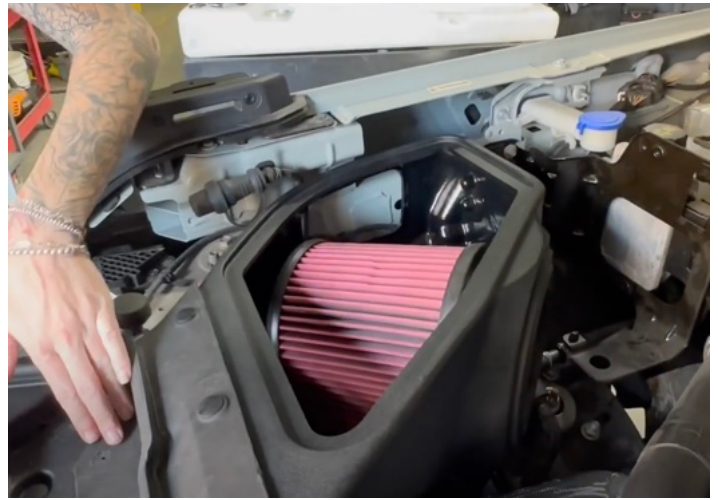


STEP 19 (IMAGE 2)



STEP 20

Install the S&B air filter into the airbox.

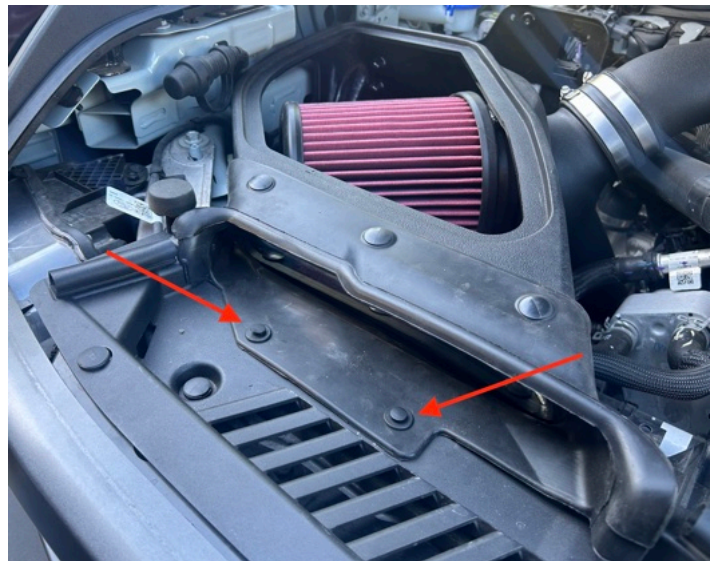


STEP 21

Install the S&B silicone scoop with the two push rivets. In order to install the rivet on the right, you will need to expand the hole by drilling through it as seen in our install video.

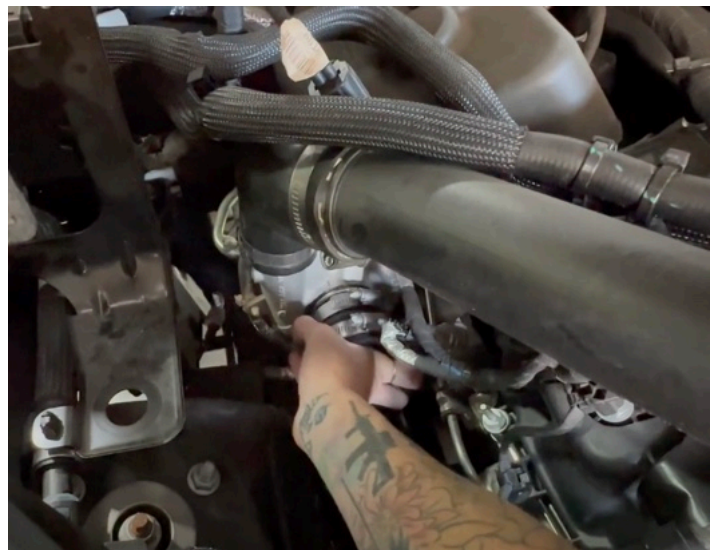
(Section 7:55-8:15)

<https://youtu.be/stfnkucrhas>



STEP 22

Loosely install the clamps onto the coupler then install the coupler onto the turbo. Once it's on, tighten down the back hose clamp only.



STEP 23

Install the shorter S&B intake tube into the vehicle. Then tighten down the hose clamp at the turbo and air filter.



STEP 24

Install the other S&B intake tube into the vehicle. Then tighten down the hose clamps.



STEP 25

Remove the 90 degree fitting that is on the stock intake tube, then install it onto the S&B intake tube in order to connect the hose.

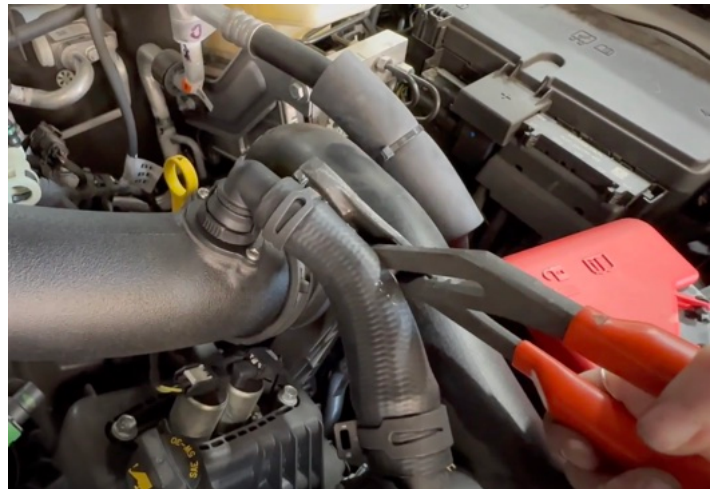


STEP 25 (IMAGE 2)



STEP 26

Slide the clamp back over and clamp down to tighten.



STEP 27

Reinstall the bolt you removed earlier.



STEP 28

Reconnect the 3 quick connect fittings and the IAT sensor.



STEP 29

Remove the protective covering over the Clear Lid and then insert the Lid into the Lid Seal. Then install the Lid Seal with Lid onto the top opening of the Box. Start with one corner of the Box and work your way around until the Lid Seal with Lid is fully snapped into the Box opening.



STEP 30

Inspect your installation, make sure the kit is properly positioned and all fasteners and hose clamps are secured. Keep all stock parts in case you would ever need to reinstall the stock intake assembly. If you are an installer, give the owner the QR code for the Installation Instructions so that he/she is aware of the "Periodically Check the Following" procedures given in the beginning of the Instructions. The Installation is now complete.





WIN A FREE TOOL TRAY

Sign-up below to receive the latest on product launches, insider tips and more. You'll also be entered into a tool tray giveaway where we choose a new winner every week.

Email Address

Sign Up

SUPPORT

CONTACT US

CALL US - (909) 947-0015

FAQS

MILLION MILE WARRANTY

YOUR VEHICLE'S WARRANTY

UPGRADE GUARANTEE

SHIPPING & RETURNS

SAFETY DATA SHEETS

ABOUT US

WHY S&B

OUR TESTING PROCESS (ISO 5011 STANDARD)

FIND A DEALER

BECOME A DEALER

DEALER LOGIN

UNILATERAL PRICING POLICY

LET S&B USE YOUR VEHICLE

WORK @ S&B

