

792100 / 793100 - Focus RS & ST Carbon Fiber SF Intake System Install Instructions

793100 - Ford Focus RS & ST Carbon Fiber Intake

Focus ST 2013-2018

Focus RS 2016-2018



Congratulations on your purchase of the COBB Tuning Focus RS Carbon Fiber Intake System! The following instructions will assist you through the installation process. Please read them BEFORE beginning the install to familiarize yourself with the steps and tools needed. If you feel you cannot properly perform this installation, we HIGHLY recommend you take the vehicle to a qualified and experienced automotive technician.

Parts List

- x1 3" - 2.5" silicone reducer (to turbo)
- x1 3" 45-degree degree silicone elbow (to airbox)

- x3 #48 clamps
- x1 #40 clamp
- COBB carbon fiber intake tube
- COBB carbon fiber intake airbox lid
- Airbox lid rubber seal
- Intake tube rubber grommet w/ metal insert
- 6mm x 25mm flanged hex bolt

Tools Needed

- Torx T27 screwdriver
- Flathead screwdriver
- Phillips head screwdriver
- 3/8" ratchet
- 3/8" 7mm socket
- 3/8" 8mm socket
- 3/8" 10mm socket
- 3/8" 12mm socket
- 3/8" 6" extension



Remove the Stock Intake System

1. Remove the plastic engine cover by gently pulling up. It is merely held down by pressure clips.





2. Remove (2) Torx bolts securing down the front of the front windshield cowl using a Torx bit. There will be a bolt on the driver's side and on the passenger's side of the engine bay.







3. Remove (4) pressure clips securing the front windshield cowl using a flathead screwdriver.





4. Gently pull up and release the (2) debris covers on the front windshield cowl. There will be one on the driver's side and one on the passenger's side.







5. Remove the (2) 7mm bolts securing the the debris/water guard under the front windshield cowl. There will be one on the driver's side and one on the passenger's side.







6. Gently lift up the front of the front windshield cowl and remove the debris/water guard.

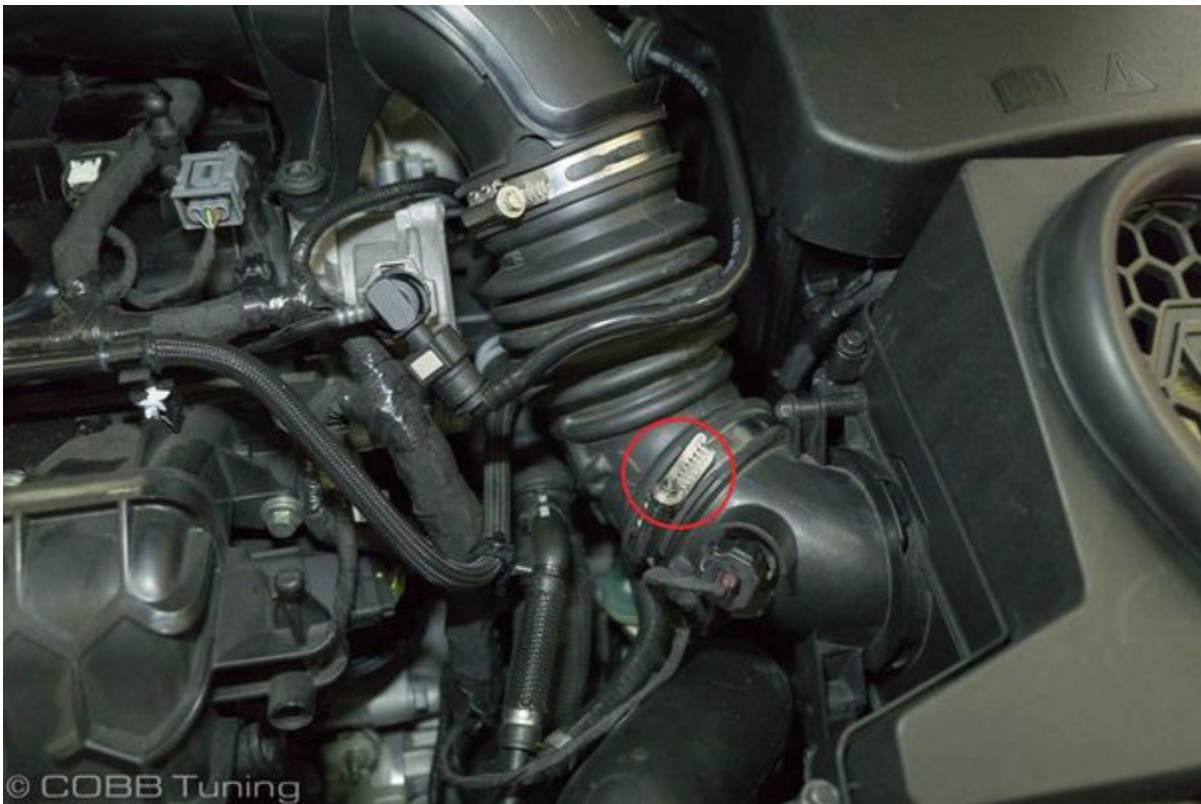




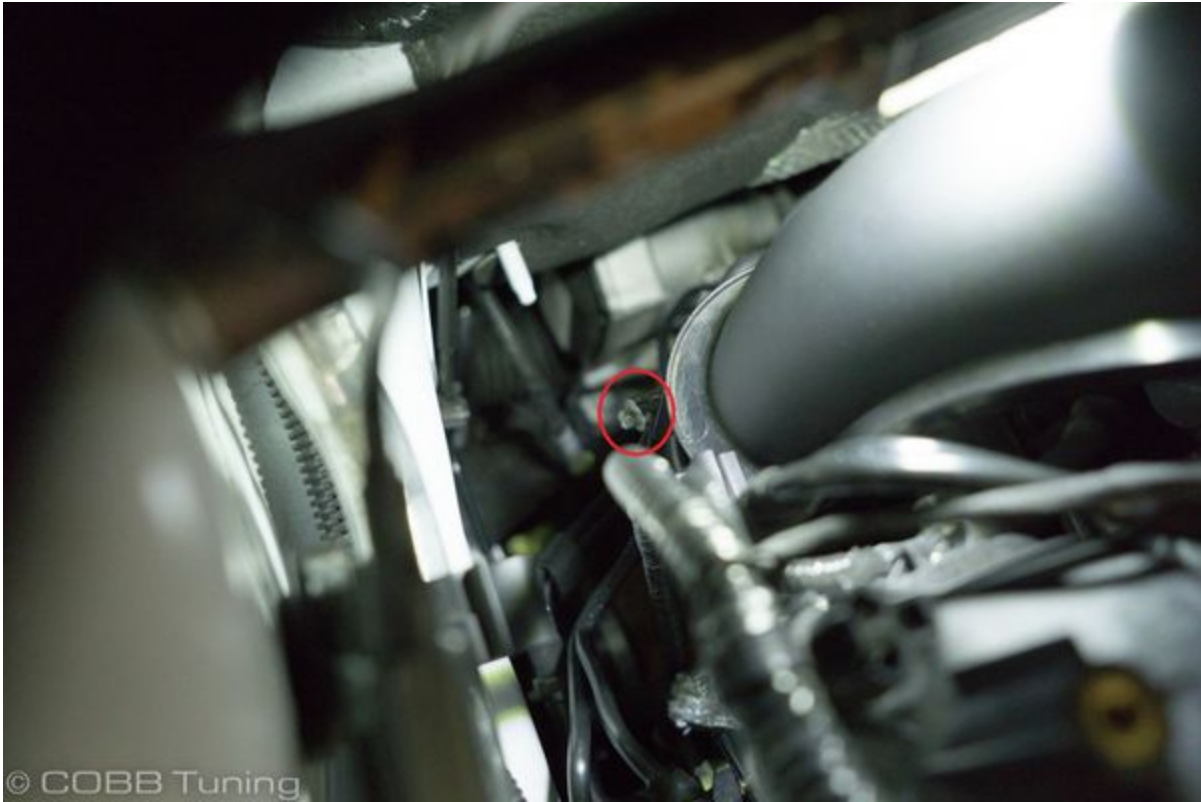
7. Loosen the (2) hose clamps connecting the two sides of the intake pipe using a 7mm socket.



8. Loosen the single hose clamp securing the intake pipe to the airbox using a 7mm socket.



9. Loosen the single hose clamp securing the intake pipe to the turbo using a 7mm socket.

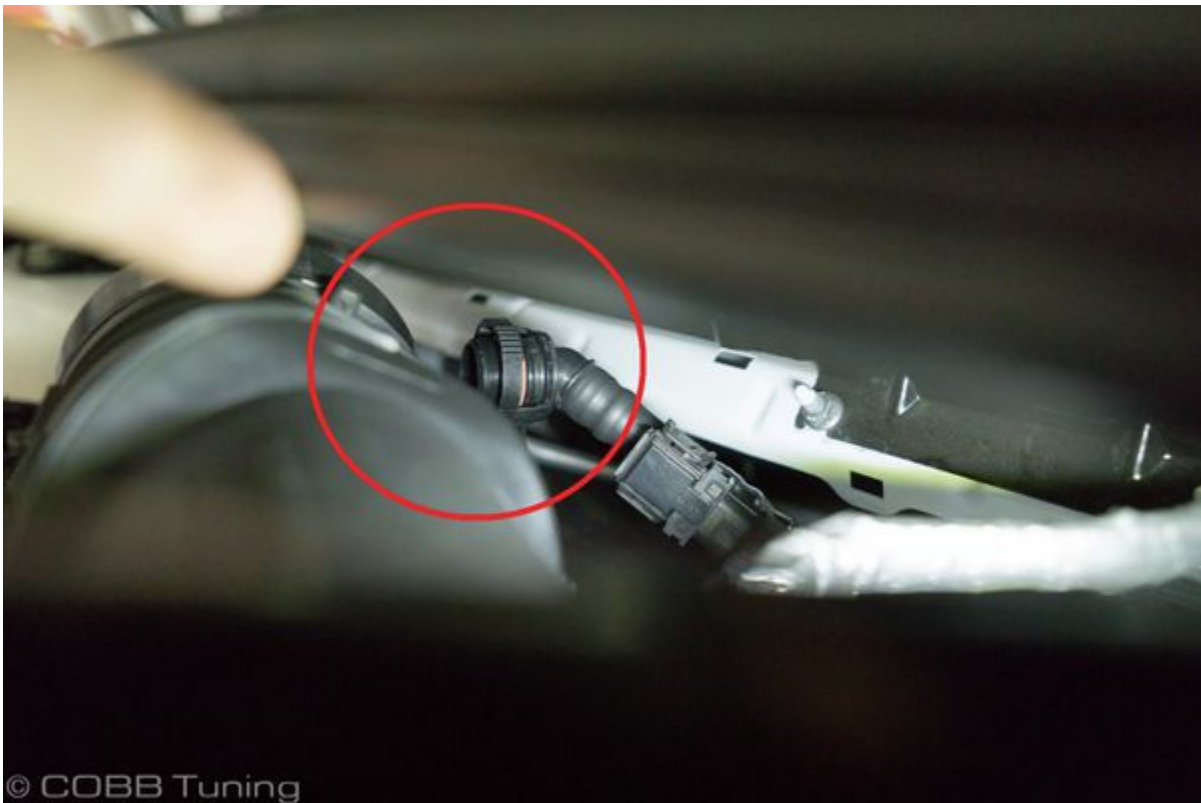


10. Remove the rubber grommet from the mounting location securing the electrical harness to the intake pipe.





11. Disconnect the PCV plug from the back of the intake pipe. You may need to gently lift up the the front windshield cowl to gain access to the plug.



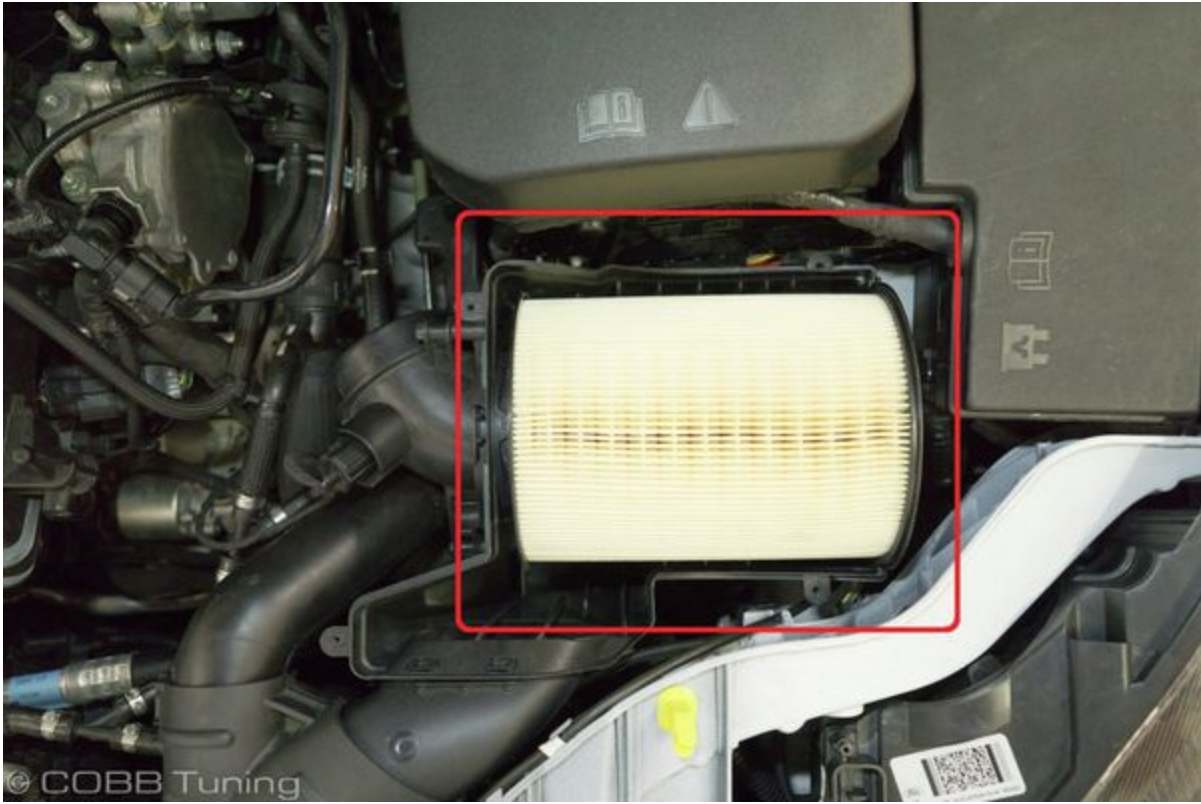
12. Gently lift and remove the stock intake system from the car. Be wary of any electrical cables or vacuum hoses that may be in the engine bay as you're removing the piping.



13. Using a Phillips head screwdriver, remove the (4) screws securing the intake airbox lid.



14. Remove the stock intake filter.

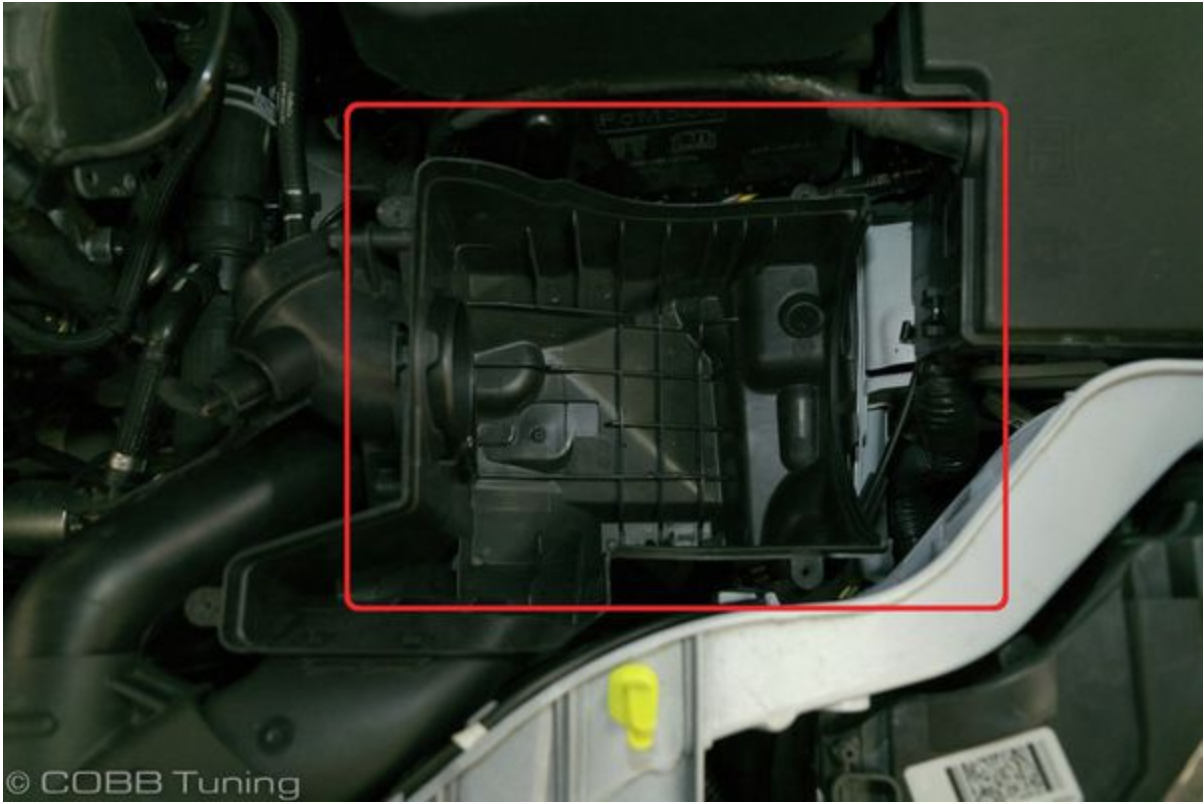


Install the COBB Carbon Fiber Intake System

1. Install the provided silicone trim along the grooves on the top fo the COBB airbox lid.



2. Insert the new COBB reusable air filter into the airbox. Be certain that the lib of the filter is behind the lip of the airbox.

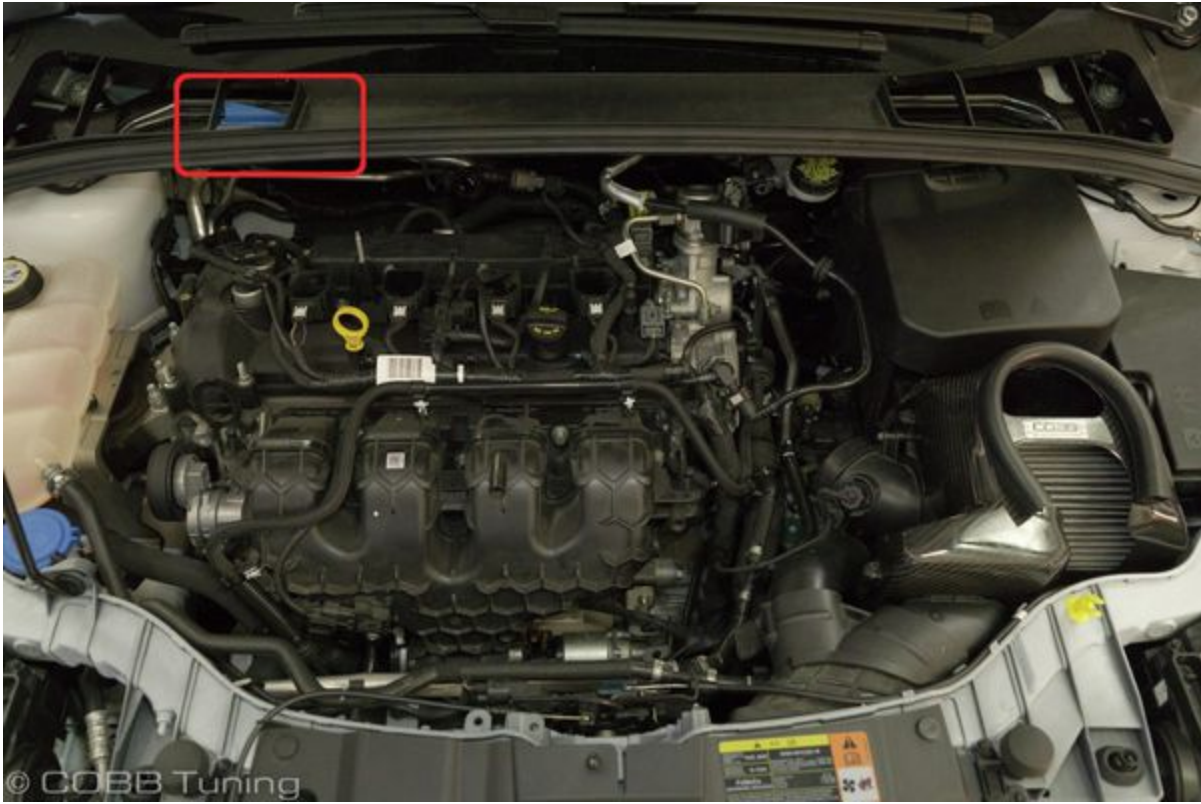




3. Gently place the new carbon fiber airbox lid on the airbox and secure it with the (4) OEM screws.



4. Place a small amount of painters tape or similar product to the underside of the front windshield cowl cover to prevent scratching the new carbon fiber intake tube as you install it.



5. The installed intake pipe will be connected as such:



There are two different reducers included. The shorter one will be used if installing the intake onto a Focus RS and the long one will be used for the Focus ST

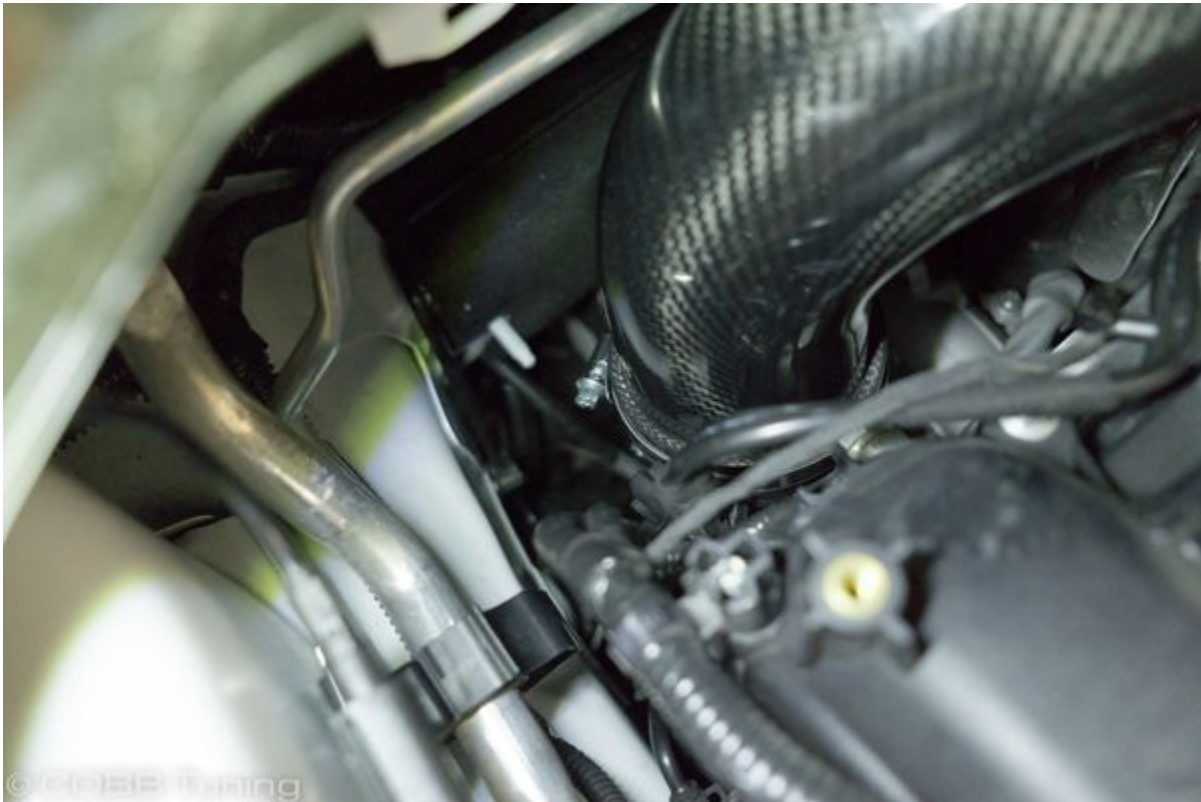


6. At this time go ahead and install the adapter for the PCV hose if running the traditional SF intake.
7. Install the supplied rubber grommet and metal bushing onto the COBB carbon fiber intake pipe.





8. Connect one end of the assembled intake tube on the turbo inlet, and connect the other end to the intake airbox.





9. Attach the intake tube bracket to the engine using the supplied 6mm x 25mm flanged hex bolt.





10. Install the PVC connection on the rear of the intake tube.



11. Tighten the clamps securing the silicone on the intake tube.

12. Reinstall the OEM engine lid cover support.



13. Insert the lower cowl debris guard.



14. Secure the lower cowl debris guard on the driver's side with the OEM bolt.



15. Secure the lower cowl debris guard on the passenger's side with the OEM bolt.



16. Reinstall the passenger's side upper cowl debris guard by pressing it on until you hear it click.



17. Reinstall the driver's side upper cowl debris guard by pressing it on until you hear it click.



18. Secure the upper and lower cowl portions on the passenger's side with the OEM bolt.



19. Secure the upper and lower cowl portions on the driver's side with the OEM bolt.



20. Finish securing the upper cowl by reinstalling the (4) OEM push pins along the forward edge.



21. Reinstall the engine cover by merely applying downward pressure from the top.



Links

[Ford Focus ST](#)

Main Installation Instruction Repository for Focus ST Parts

[Ford Focus ST Map Notes](#)

Link to Focus ST Map Notes to see what map you should be on given the parts you've added

Contact Us:

COBB Customer Support

Web Support and Tech Articles: [COBB Tuning Customer Support Center](#)

Email: support@cobbtuning.com

Phone support available 9am to 6pm Monday-Thursday. 9am to 4pm Friday (CST)

866.922.3059

[return to www.cobbtuning.com](http://www.cobbtuning.com)