

# Sport Door Panel Instructions

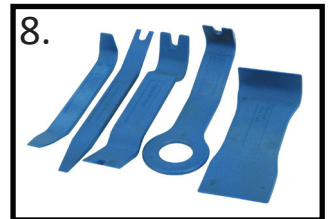
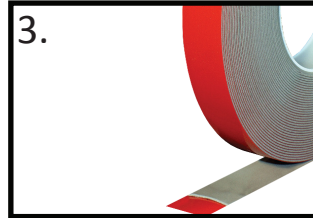


**Tools Needed:**

- 1. Adhesion Promoter
- 2. Rubbing Alcohol
- 3. Double Sided Tape

- 4. Phillips Screwdriver
- 5. Self Tapping Screws
- 6. 1/8 inch Drill Bit

- 7. Rag
- 8. Plastic Trim Tool

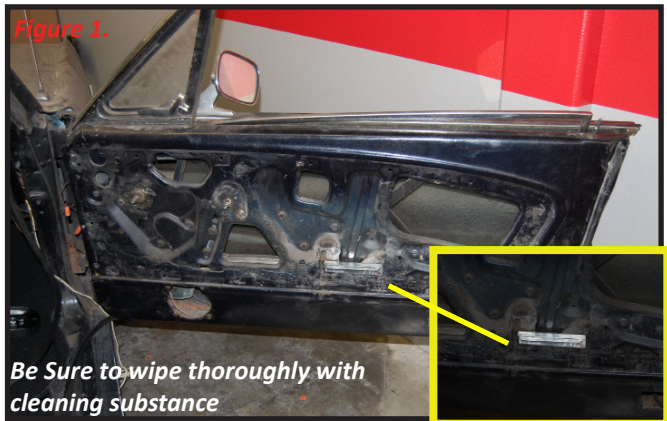


**Table Of Contents**

- I. Remove Stock Door Panel.....1
- II. Clean Surface/Install Double Sided Tape.....2
- III. Locate Pre-Existing Holes.....2
- IV. Remove Tape.....3
- V. Install Door Panel .....3
- VI. Reinstall Window Crank, Door Handle, & Pull Handcup.....3

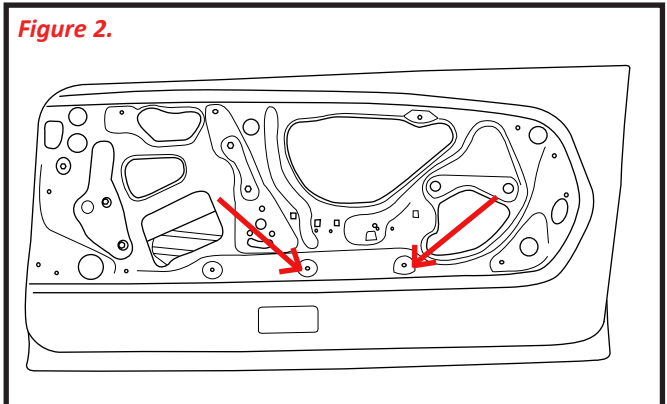
## Step 1.

If you are installing the Standard equipped door panel, refer to step 1.b. However, if you have a Deluxe Style Door Panel, now begin to remove stock door panel.



## Step 1.b

Using the Drill Hole Template supplied on Page 4, poke holes through the indicated holes pointed out by the arrows. Now hold Drill Hole Template against the door panel directly over the holes depicted in Figure 11. With a marker, mark two dots where you previously poked through the Drill Hole Template. Now proceed to drill a 1/8th inch hole on each marked dot.



## Step 2.

Clean the top rail of the door panel with adhesion promoter or with rubbing alcohol.



## Step 3.

Install supplied double-sided tape to top of door panel, make sure to trim excess tape from the door. Slice through red plastic and then pull three inches off the double sided tape towards the outside of the door panel. (Make sure window is rolled down during this installation step)



## Step 4.

Now locate the pre-existing holes at front of door, then align pre-installed christmas tree fasteners that are on your new door panel. Begin to press door panel lightly to ensure correct positioning. Tap with fist to fit properly.



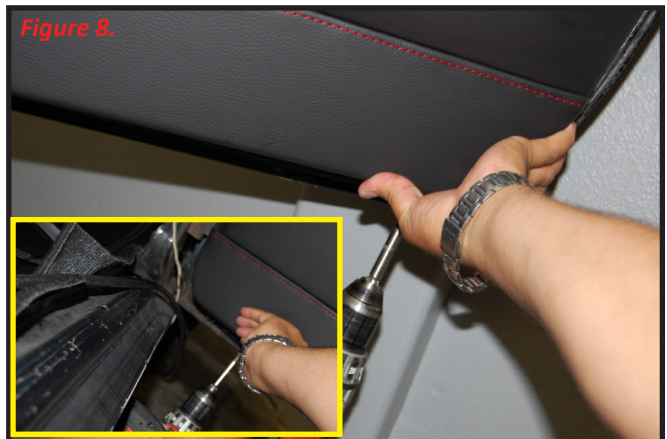
## Step 5.

Now remove double sided tape, one side at a time. (Remove Carefully) With rag, wipe down the top of the new door panel and align . Stick door panel to tape.



## Step 6.

Using a 1/8 inch Drill Bit, install bottom of the door panel with three Self Tapping Screws(included in Door Panel Kit), located on the bottom of door panel.



## Step 7.

Now install window crank, door handle, and pull handlecup.



**Drill Hole Here** ↓  
○ Drill 1/8th of an inch hole here

↓ **Drill Hole Here**  
○ Drill 1/8th of an inch hole here

**Poke Hole Here**

**Poke Hole Here**

○ **Guide Hole** ↘

↘ ○ **Guide Hole**

Figure 11.