



Mon - Thurs 7:30am - 5:00pm | Friday 7:30am - 4:00pm CST

**1-800-779-2102**

**WWW.DEEZEE.COM**

**PLEASE INSPECT YOUR PRODUCT FOR DAMAGE  
BEFORE PROCEEDING TO INSTALLATION.**

**INSTRUCTIONS FOR RETURNS:**

ALL PRODUCTS NEED RETURNED TO POINT OF PURCHASE  
FOR WARRANTY DEFECTS, DAMAGES, OR RETURNS.

FOR MISSING PARTS PLEASE CONTACT DEE ZEE INC.  
1-800-779-2102

REGISTER YOUR PRODUCT ONLINE: **[www.deezee.com/registration](http://www.deezee.com/registration)**

VIEW INSTRUCTIONS ONLINE: **[www.deezee.com/instructions](http://www.deezee.com/instructions)**

**FOR INSTALLATION ON DRIVER'S SIDE ONLY**



**Before returning this product to the store of purchase**

**Contact Dee Zee if you experience the following problems:**

- Missing Parts
- Installation Problems/Questions
- Warranty Questions

**1.800.779.2102**

Hours of operation: 8am - 5pm CST, Mon-Friday

Review complete warranty policy and register your product at:

[www.deeze.com](http://www.deeze.com)

DZ 43204  
TAILGATE ASSIST  
FORD F-150 2015-CURRENT



BALL MOUNT PLATE



TORX WRENCH

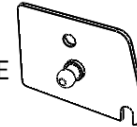


TAILGATE  
BALL MOUNT PLATE

BOLT



SHOCK



**PARTS LIST:**

ITEM	QTY
BALL MOUNT PLATE	1
SHOCK	1
TORX WRENCH	1
BUTTON HEAD BOLT	1
MYLAR SHEET	1
TAILGATE	1
BALL MOUNT PLATE	

**TOOLS REQUIRED:**

- T-50 TORX
- M5 ALLEN WRENCH
- 10MM WRENCH

**NOTE: THIS PRODUCT CAN ONLY BE INSTALLED ON THE DRIVER'S SIDE.**

**STEP 1)**

On the driver's side locate the two bolts attaching the tailgate near the tailgate pivot point.



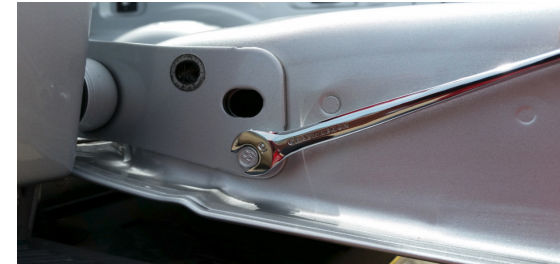
**STEP 2)**

Using a 10mm wrench, remove only the top bolt.



**STEP 3)**

Using a 10mm wrench, loosen, but **DO NOT** remove, the lower bolt.



**LOOSEN, BUT DO NOT REMOVE**

## FOR INSTALLATION ON DRIVER'S SIDE ONLY

### STEP 4)

The tailgate ball mount plate has an open slot on one side. Slide the plate over the loosened bolt between the tailgate and the washer on the bolt.



### STEP 5)

Thread the button head bolt into the tailgate, through the hole in the tailgate ball mount plate.



Tighten the button head with an M5 allen wrench and the other bolt with a 10mm wrench.

### STEP 6)

Remove the tailgate cable from the bolt. Use a T50 Torx socket or the wrench provided to remove the cable bolt.



### STEP 7)

Install the bolt removed from the previous step through the hole in the ball mount plate back into the hole.



Tighten the bolt with the T50.

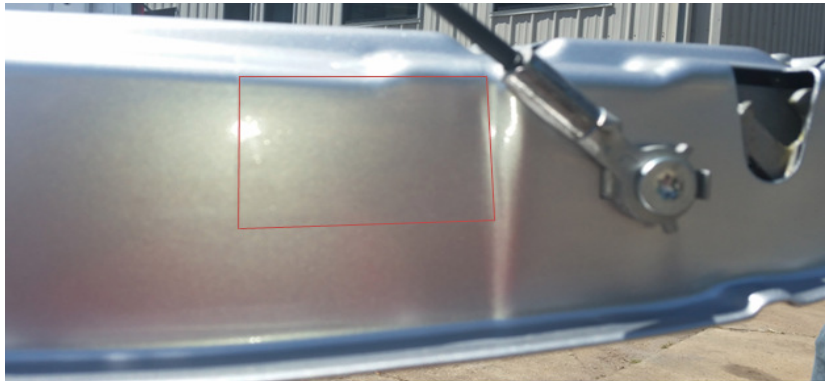
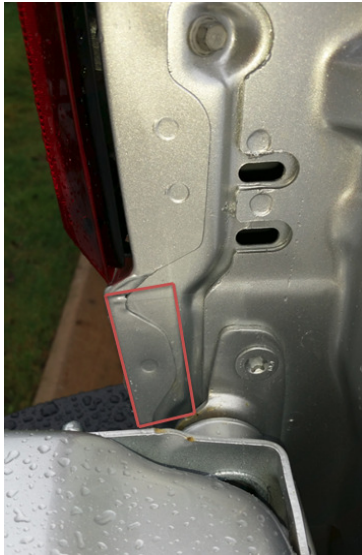


## FOR INSTALLATION ON DRIVER'S SIDE ONLY

### STEP 8)

A Mylar sheet has been provided to help prevent components from rubbing against the truck bed and tailgate in the event that any part becomes loose. Using scissors, cut the mylar to the size needed. Apply the mylar to the truck bed and tailgate where tailgate assist components will be in close proximity during opening/closing. The red lines show the area where the mylar has been installed.

The vehicle shown is an example of how the mylar can be installed. Your vehicle may differ from the vehicle shown.



### STEP 9)

Install the narrow end of the shock on the ball mount previously installed.



Install the cable back onto the cable bolt, and the larger part of the shock on the ball mount.



Periodically check the upper and lower mounting locations to insure that parts have not loosened through repeated use. If either mounting location is found to be loose, re-tighten the hardware as needed.