



P/N 5001 Made in USA

Tru-Billet Fuel Door Installation Instructions

Thank you for your purchase. Please read all directions before beginning Installation. Consult factory manual if you have any questions, and wear appropriate safety gear at all times. Vehicle should be off, with ignition key removed and in park with parking brake set.

Tools Needed:

7mm Socket / Ratchet 3/8" combination wrench Trim tool remover or a pair of side-cutters

Directions:

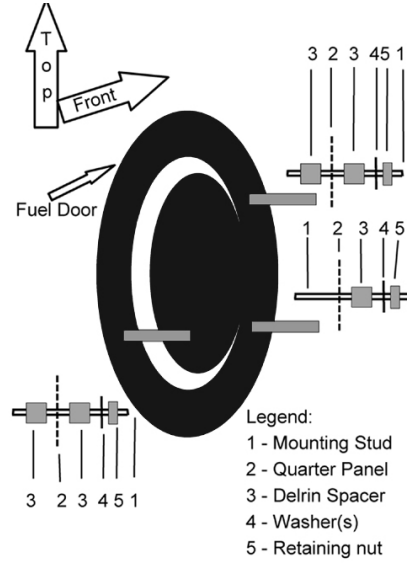
1. No smoking, sparks, or open flames during installation!! With the car off, start by opening the factory fuel door (Fig 1), and removing the gas cap to fuel door retaining line with the trim tool remover or side cutters. Leave the gas tank cap in place. If desired, you can re-install the lanyard line onto one of the studs of the new door during assembly.
2. Using the 7mm socket, remove the two bolts that hold the factory fuel door to the quarter panel sheet metal. Hold the door while doing this so it does not drop and damage itself or the quarter panel. After safely removing the factory door, remove the rubber bump-stops for the door as well.
3. Remove the nuts from the new fuel door, and remove the washers and Delrin spacers. Leave the studs in place. Once removed, re-stack as shown in Fig.2-3 on the fuel door. Assemble the door to the car, with the door open to help in alignment. Once it is in place, stack the delrin spacers on the inside of the quarter panel, followed by the appropriate washers and nuts. Once assembled by hand, use the 3/8" wrench to tighten using sufficient pressure to pull the door into final alignment. Loc-Tite is recommended on studs to insure piece does not loosen on car, and is already used on studs where they attach to the fuel door.
4. Remove tools, close the door, and enjoy! Fuel doors are anodized or optionally plated for a long life, and normal care, maintenance, and periodic lubrication of the hinge mechanism will extend their life even more. Do not forget your gas cap when fueling vehicle, as it will no longer remain attached to the car if you did not re-use the lanyard line. (Fig 4)

If you have any questions, feel free to contact us at (321)-722-2813 or via email at –
Customersvc@SilverHorseRacing.com

Fig. 1 – Factory Fuel door is located on Driver’s side of vehicle.



Fig. 2 – After removing supplied nuts, washers, and spacers, re-stack for assembly as shown. Your vehicle may require a slightly different arrangement or some additional washers. We recommend using only plastic or stainless steel to avoid corrosion.



Part 4/5 are now combined into a single captive nut – no lock washer is required

Fig. 3 – Note assembled view of spacers on vehicle

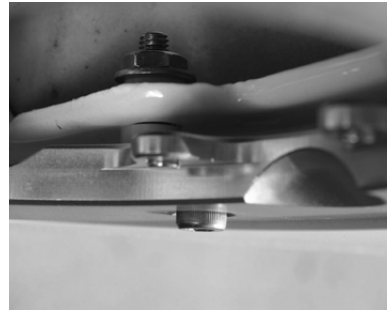
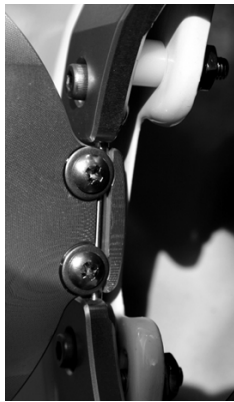


Fig 4 – Installed and ready to go

