

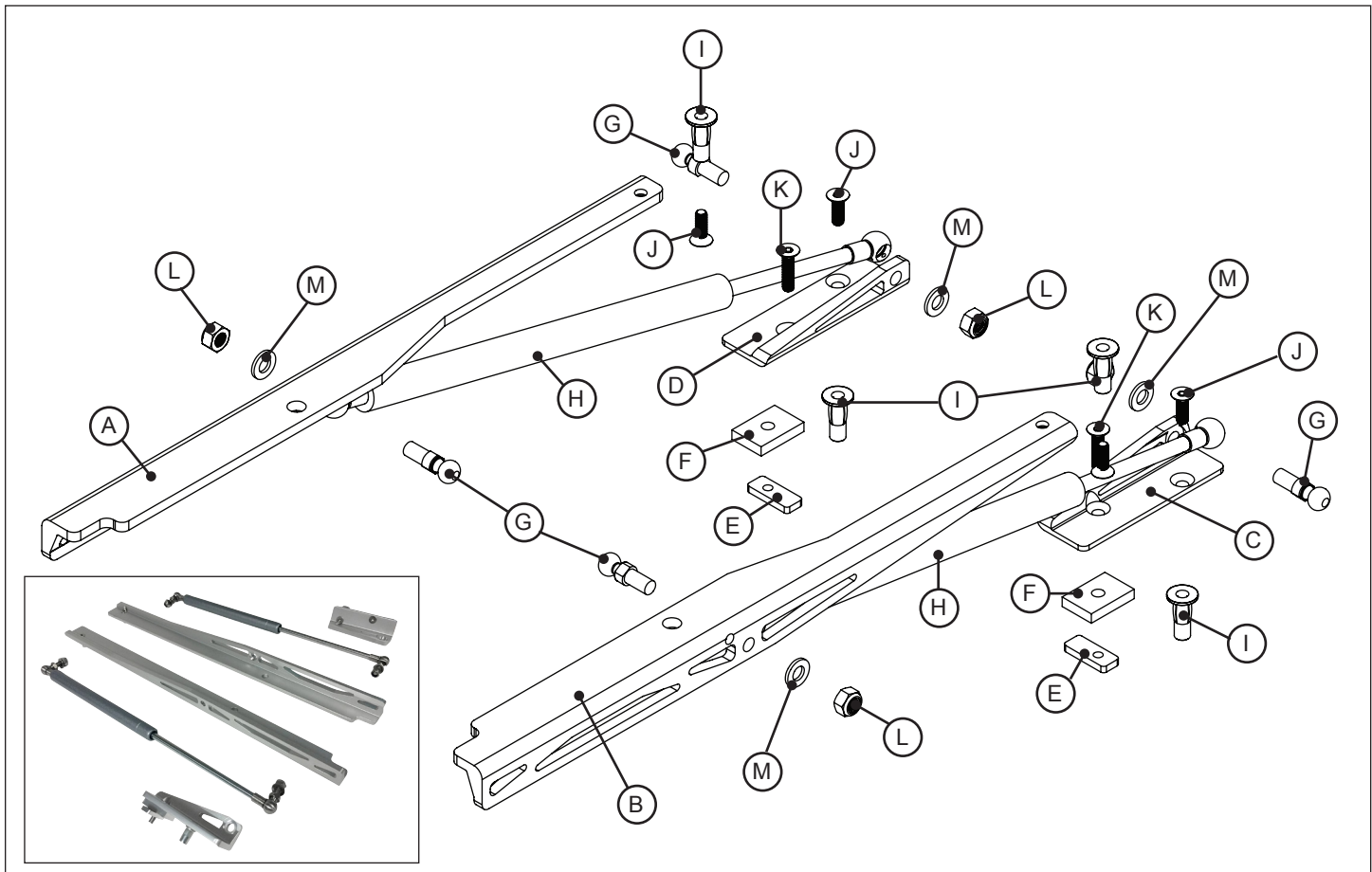
Thank you for choosing this Drake Muscle Cars product for your vehicle. Please read these instructions carefully. Make sure you have the correct parts and proper tools before attempting installation.

**NOTE: We recommend using fender covers to protect the paint of the vehicle during installation.**

System Components		
Item.	Description	Qty.
A	Hood bracket, driver side	1
B	Hood bracket, passenger side	1
C	Fender bracket, passenger side	1
D	Fender bracket, driver side	1
E	Threaded fender insert	2
F	Fender spacer	2
G	Ball joint pin	4
H	Strut, 380mm/260mm	2
I	M6-1 Rivnut	4
J	M6-1.0X18 Stainless flathead Allen bolt	4
K	M6-1X24MM Stainless flathead Allen bolt	2
L	M8-1.25, Nylock nut	4
M	M8 Flat washer	4

**WARNING!**  
Always wear gloves and protective eye-wear when working on your vehicle. If any part of this installation seems beyond your level of experience, please seek the help of a professional installer. It is better to do it now than halfway through the installation.

- TOOLS REQUIRED FOR INSTALLATION**
- 3/8" drill
  - 1/8" pilot drill
  - Marker
  - Center punch
  - 10mm wrench
  - M4 Allen wrench
  - 12mm wrench
  - Telescoping hood prop
  - 13mm wrench
  - White grease pen
  - Rivnut installation tool
  - Knife, heavy-duty scissors, or wire cutter



1. Open the hood and secure it in place with the hood prop. Remove the three clips securing the battery cover on the passenger side and remove the cover. Disconnect the battery. See owners manual for reference if needed.

2. Beginning on the passenger side, locate the small hole next to the large access hole on the top of the fender shown in **Fig 1**. Using a 3/8" drill bit, carefully drill out the small hole and blow away any debris.

3. Using a rivnut tool, install one of the supplied rivnuts (I) in the enlarged hole in the fender.

4. Perform steps 2 and 3 on the driver side fender.

5. Take the passenger side fender bracket (C) and insert a 6mm x 24mm Allen head bolt (K) into the rear hole on the bracket (tapered end of the bracket). Then slide a fender spacer (F) with the raised machined oval facing away from the bracket on the Allen head bolt (K) and then thread on a threaded fender insert (E). Only thread the insert onto the bolt a few turns to keep it loose. **Fig 2**.

6. Slip the long end of the threaded fender insert (E) into the larger hole next to the newly installed rivnut on the passenger side fender. The fender spacer (F) will sit on top of the fender with the machined oval indexed properly into the large hole in the fender. **Fig 3**.

7. Once in position, align the forward hole on the fender bracket (D) over the rivnut previously installed. Loosely install a 6mm x 18mm Allen head bolt (J).

8. Check to make sure the fender spacer (F) is properly indexed into the large oval hole in the fender then tighten the two Allen bolts with a 4mm Allen wrench. **Fig 4**.

9. Perform steps 5 thru 8 on the driver side using bracket (D).

10. Unfasten the two rear clips securing the windshield washer hose to the underside of the hood.

11. On the passenger side, using a 12mm wrench remove the nut on the front mounting bolt of the hood hinge bracket and set it aside for use later. Then loosen, DO NOT REMOVE, the rear nut so it is only held on by a few threads. **Fig 5**.

12. Position the passenger side hood bracket (B) on to the hood hinge bolts. The rear bolt will fit in the notch on the end of the bracket. Then reinstall the nut removed earlier and snugly tighten the two nuts **Fig. 6**

13. Using the hood bracket (B) as your template, with a marker, mark the location of the 3rd hole on the bottom of the hood.

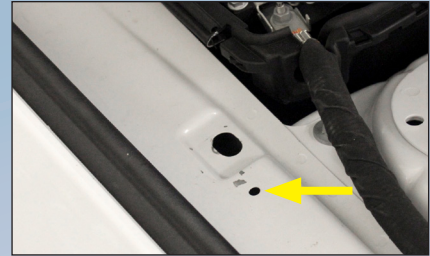


Fig. 1

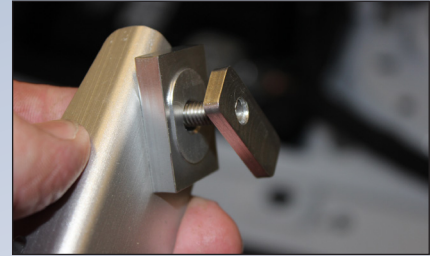


Fig. 2



Fig. 3



Fig. 4

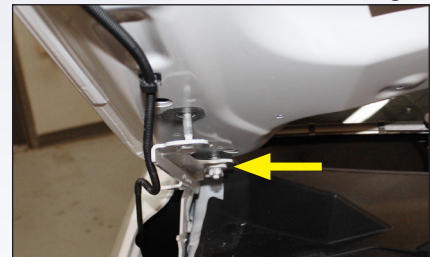


Fig. 5



Fig. 6

14. Now unbolt the hood bracket (B) by removing the nut on the front mounting bolt and set it aside for use later. Then loosen the rear nut so it is only held on by a few threads. **Fig 7.**

15. Center punch the marked location of the 3rd bracket hole. Then using an 1/8" drill bit, carefully drill a pilot hole in the marked location. You only need to drill through the surface. **USE EXTREME CAUTION. Do not use too much force. Drilling too deep could dent or puncture the top of the hood.** Then using a 3/8" drill bit, carefully drill out the pilot hole.

16. Using the rivnut installation tool, install one of the supplied rivnuts (I) into the newly drilled hole in the hood. **Fig 8.**

17. Reinstall the hood bracket (B) as done previously and install one of the supplied 6mm x 18mm Allen head bolts (J) into the forward hole.

18. Tighten all hardware used to secure the hood bracket (B) and fender bracket (C)

19. Perform steps 11 thru 18 on the driver side using bracket (A).

20. Remove the clips on the ends of all four supplied gas struts (H), set them aside for use later. Remove the ball pins from the struts. **Fig 9**

21. Install a ball pin into the passenger side hood bracket (B) with the ball facing the center of the car. Use a supplied 8mm washer (M) and nylock nut (L) and securely tighten.

22. Install a ball pin into the passenger side fender bracket (C) with the ball facing the outside of the car. Use a supplied 8mm washer (M) and nylock nut (L) and securely tighten.

23. Perform steps 21 and 22 on the driver side.

23. Position the battery cover back in place in the factory location. The area of the battery cover that is resting over the fender bracket (C) will need to be trimmed for a proper fit. Use the included template to mark the area to be trimmed. **Fig 10.** Use a knife or heavy duty scissors to trim the cover. Once you are happy with the fit, reinstall the battery cover.

24. Attach the strut (H) on to the ball pin in the passenger side hood bracket (B) with the cylinder end up. Press the strut onto the ball pin and reinstall the safety clip making sure it is properly engaged. **Fig 11.**

25. Using a telescoping hood prop or an assistant, raise the hood up so that the lower strut mount can be aligned with ball pin in the fender bracket (D). Press the strut on to the ball pin and install the safety pin. **Fig 12**



Fig. 7



Fig. 8



Fig. 9



Fig. 10



Fig. 11



Fig. 12

26. Repeat steps 24 and 25 on the driver side.

27. Reattach the windshield washer tube to the hood on the passenger side. The forward clip will attach in the factory hole in the hood, the rear clip will need to be relocated back approximately three inches so that it lines up with the hole in the new hood bracket (B). Be careful to route the hose so it clears the hood catch on the outside of the hinge bracket near the pivot point. **Fig 13a and 13b**

28. With the hood supported by the new lift system. Check to make sure all bolts and fasteners are secure and tight. Make sure to remove all tools and loose hardware from under the hood.

29. Finally, remove the factory hood prop rod using a 10mm wrench.

30. Slowly close the hood to check and make sure everything clears and there is nothing binding or being crushed. Pay close attention to the windshield washer tube and the area where it routes into the fender.



The 2015 Mustang GT used for these installation images was also fitted with Drake Muscle Cars billet engine caps and a strut tower brace. Available from your favorite Drake Muscle Cars retailer.



FR3Z-16S052-BL Strut tower brace Billet engine caps and fuse box lid



Fig 13a



Fig 13b

Also available from Drake Muscle Cars  
Speed Mesh Hood Vents for 2015+ Mustang GT



FR3Z-16C630-M

**Drake Muscle Cars**

130 Cassia Way, Henderson, NV 89014  
Tel: (702) 853-2060 [www.DrakeMuscleCars.com](http://www.DrakeMuscleCars.com)

## FR3Z-16796/7-BL Passenger side fender bracket / battery cover cut template.

Cut out this template and align the circle over the hole at the corner of the battery cover. Then mark the area labeled "Trim this area". Using a knife or heavy-duty scissors remove that area of the battery cover and check for proper fit.

