

Thank you selecting the Shelby GT500 Beauty Ring kit as used on the 2020 Shelby GT500 Signature Edition. This instruction is a basic guide to show you how to install your new beauty rings.

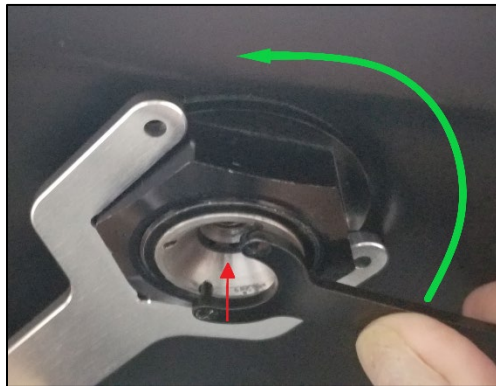
Step 1 - Open the hood on your GT500 and locate the bottom side of your beauty ring.



Step 3 – Remove the internal workings of the beauty ring. (Note: Remember, you will be reusing these)



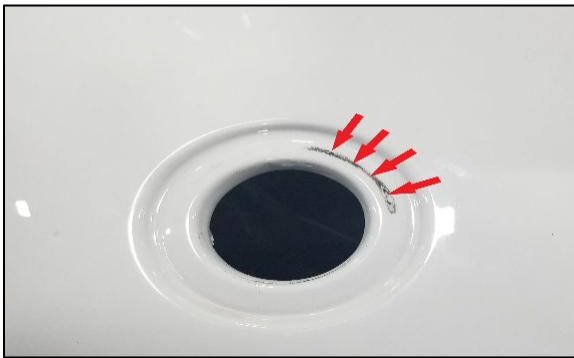
Step 2 - Remove the internal workings of your beauty ring. The internal workings will be reused. Using the supplied tools in your kit, use the large wrench to hold the retainer nut of the beauty ring. Use the small wrench, with the pins on it, to loosen the internal workings by inserting the pins into the holes of the internal workings. In a counterclockwise motion loosen the internal workings.



Step 4 – With the large wrench loosen and remove the retainer nut in a counterclockwise motion. Make sure to keep the retainer nut and washer as they will be reused.



Step 5 – Place a towel over the ball portion of the hood pin. Lower the hood down so that you can get to the top side of the beauty ring. There is double-sided tape holding the stock beauty ring in place. Use a generous amount of adhesive remover to loosen the stock beauty ring from the hood. Let it set. Try to gently remove the stock beauty ring by pushing up from the bottom. If it will not release, you may need to cut the adhesive using fishing line in a saw-like motion between the ring and hood. Be sure to remove any excess adhesive or debris from the beauty ring opening.



Step 6 – Once the surface is clean, it is now time to install your new Shelby beauty ring. Remove the film from the double-sided tape on the bottom side of the beauty ring.

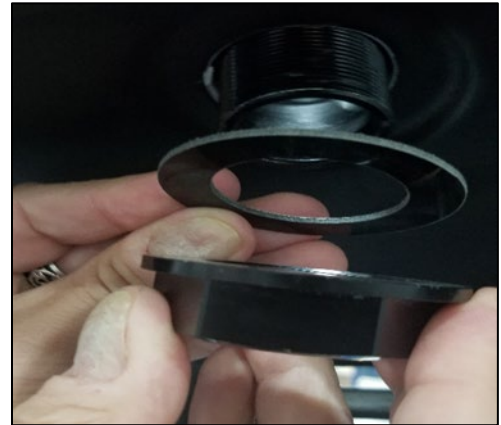


Step 7 – Lower the beauty ring into the hood opening.

**NOTE:** Be sure to place the beauty ring with the SHELBY letters facing forward before the tape touches the hood. You may not get a second chance at this.



Step 8 – Reinstall the beauty ring retainer nut and washer. Rotate the nut clockwise with the large wrench while holding the topside of the beauty ring in place (so the “SHELBY” letters stay “clocked” right where you put them. DO NOT over tighten. Very “snug” is appropriate.





Step 9 – Re install the internal workings of the beauty ring. Using the small wrench in the same fashion as when the inner workings were removed, tighten in a clockwise motion while using the large wrench to hold the beauty ring retainer nut in place. DO NOT over tighten! Very “snug” is appropriate.



Step 10 - Repeat the process for the other side.

Note: For a time, periodically check tightness of beauty ring components to be sure they are remaining tight.

**Congratulation you are finished!**  
**Enjoy your new Shelby Beauty Rings!**