

Headliner Installation Instructions

Tools Needed:

1. Awl Scratch Tool
2. Plastic Trim Tool
3. Screwdriver
4. Spring Clamps
5. Plastic Puddy Knife
6. Needle, tack, or small pointy object

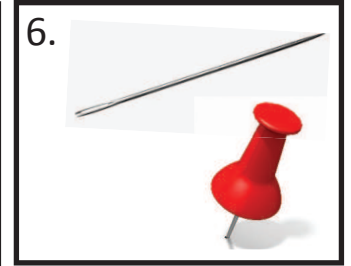
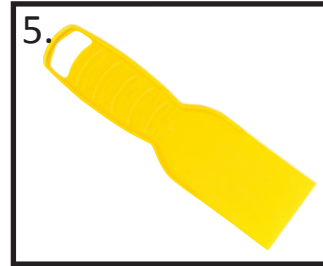
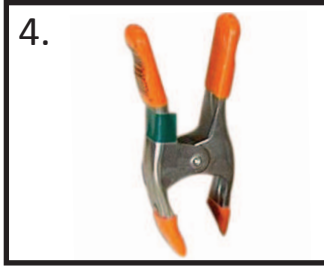
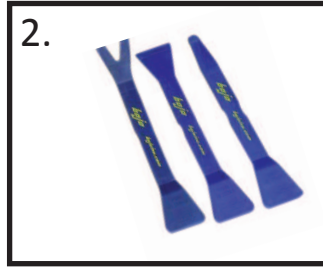


Table of Contents

I. Tools Needed.....	1
II. Factory Headliner Removal.....	1
III. Install TMI Headliner.....	2
IV. Tuck Headliner.....	3
V. Locate Factory Visor Mounting Holes.....	3
VI. Install Mirror Bracket/Visor Retaining Clip.....	3
VII. Install Sail Panels.....	4
VIII. Install A-Pillar Cover.....	4
IX. Re-Install Package Tray.....	4
X. Re-Install Windlace.....	4

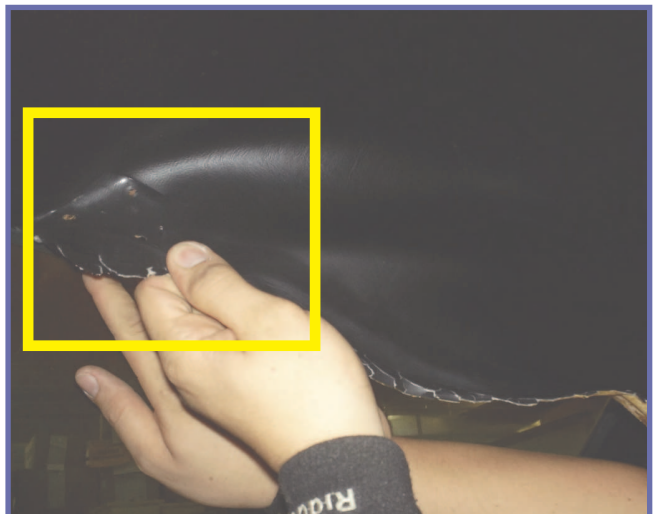
Step 1 Remove Headliner

Before you begin to install your new Headliner, you must first remove all old hardware . This includes the removal of your:

- Sun Visors
- Rear View Mirrors
- Coat Hanger Hooks
- Door Sill Plates
- Windlace
- Back Seat
- Rear Quarter Panels
- Package Tray



1. Pull material away from window rubber seal



2. Picture illustrates the pulling and bending over of the tray



Caution: Once headliner is removed, it is highly recommended to not dispose your bow rods. Bow Rods are not reproduced and can only be replaced by originals.



This picture displays the careful installation of the headliner with the help of an extra person.

Step 2 Install Headliner

Before installing the headliner, make sure you have a second person to help. To begin installation, roll all four side windows completely down. Starting from the driver's side, slide the headliner into the vehicle. Make sure to pull headliner up and over the steering wheel. Locate the pre-drilled rearview mounting holes in the headliner and poke through the material of one hole with your scratch awl tool. From here, use the scratch awl tool as a guide to find the factory mounting holes for the rearview mirror. Once you have found one hole, find the other holes as well. This will ensure the headliner is positioned properly from front to rear along with side to side. DO NOT mount your rearview mirror at this point. Have your second person use the spring clamps to hold the headliner in place.



1. Pull headliner through, make sure you pull headliner through the driver's side over the top of the steering wheel.



2. Locate pre-drilled mounting holes to ensure that headliner is accurately centered from front to rear and left to right utilizing your Awl Scratch Tool.

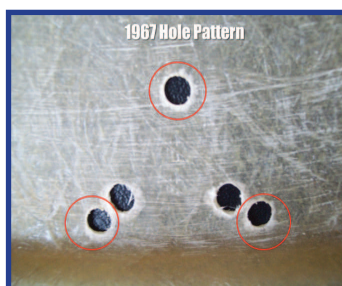


Different Years of Pre-drilled Mirror Bracket/Visor Retaining Clip Hole Patterns

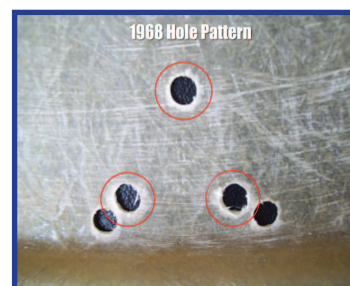
65'-66'



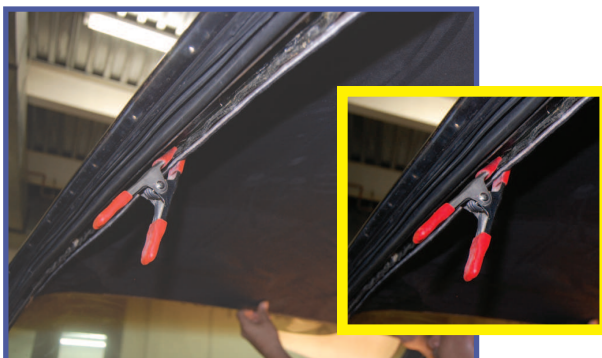
1967'



1968'



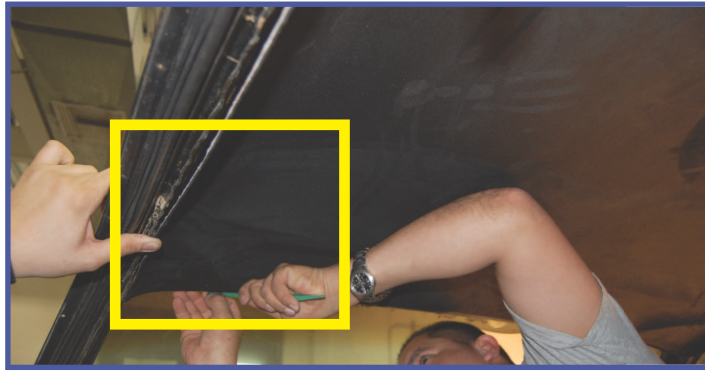
3. Once centered, use Spring Clamps to hold headliner in place.



Note: Spring Clamps are very important when installing your Headliner. They are the main tool you will utilize to hold your Headliner in place once you are finished centering the Headliner. Spring Clamps will ensure proper alignment of your Headliner Installation.

Step 3 Tuck Headliner

Using your Plastic Trim Tool or small Plastic Puddy Knife, carefully tuck the headliner in behind your windshield seal. Repeat this step for rear window. Front **MUST** be done first to ensure proper alignment.



Caution: It is very important to tuck the front headliner first and then the rear. This is done to ensure accurate alignment of headliner.

Step 4 Locate Factory Visor Mounting Holes

Using a small sharp tool such as a tack or needle, locate the factory visor mounting holes in the roof of your vehicle. Locate these holes in the front corners of the headliner on the left and right side. You can now begin installing the screws for your visors. Make sure to test fit all three screws.



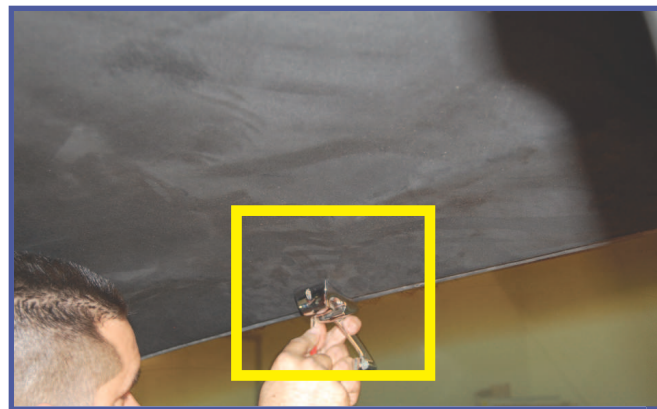
Note: It is recommended to use a tack or needle to poke through the material first, this avoids leaving large holes.



Once the holes have been located, begin to install the visors.

Step 5 Install Mirror Bracket/Visor Retaining Clip

Now it is time to locate the three pre-drilled holes found at the top center of your Headliner. Once you locate them, mount the mirror bracket and/or visor retaining clip. If you own a 65'-66' vehicle please refer to hole pattern A. If you own a 67' vehicle utilize hole pattern B. displayed below. However, if your vehicle is a 1968 model please recall that you will be using a Visor Retaining Clip instead of a Mirror Bracket. The pre-drilled Hole Patterns are shown below.



This picture illustrates the installation of the mirror bracket and/or visor retaining clip.

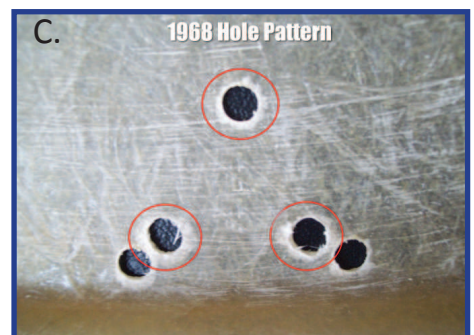
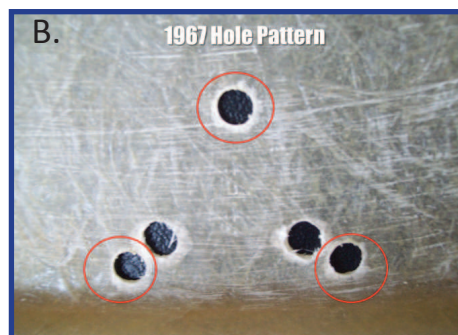


Different Years of Pre-drilled Mirror Bracket/Visor Retaining Hole Patterns

65'-66'

1967'

1968'

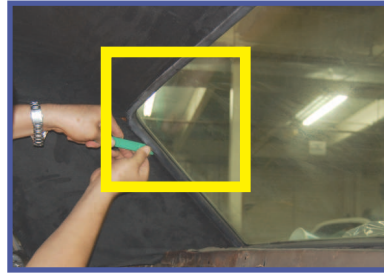


Step 6 Install Sail Panels

To efficiently install your Sail Panels (C-Pillar Covers), fit the Sail Panels to the upper corner next to the rear window. Once you position the Sail Panel, use the Plastic Trim Tool or small Plastic Puddy Knife to tuck the back side of the sail panel into the rear window seal(not under headliner) . Repeat this step for the other side.



1. Fit Sail Panels to upper corner next to rear window.



2. Using your plastic trim tool, tuck back side of sail panel into the rear window seal.



Caution: When installing your sail panels, please make sure **YOU DO NOT TUCK SAIL PANELS UNDER THE HEADLINER.** This will prevent proper installation.

Step 7 Install A-Pillar Cover

To install your A-Pillar Cover, simply tuck the bottom side of the A-Pillar Cover into the dash. Locate the A-Pillar Cover starting from the dashboard to the Headliner. (**Do Not Tuck Under Headliner.**) Using your Plastic Trim Tool or Plastic Puddy Knife, tuck the A-Pillar cover into the windshield window seal.



Using the Plastic Trim Tool, tuck the A-Pillar cover into the windshield window seal.



Step 8 Install Package Tray

Once your Headliner is in place, you can now re-install your Package Tray or purchase a completely new TMI Package Tray. Once the Package Tray is placed back properly, you can also re-install your rear quarter corner panels.



1. This picture displays the proper re-installation of your Package Tray back into the vehicle.



2. Re-Install your Rear Corner Panels.

Step 9 Re-install your Windlace

Once you have re-installed your Package Tray, you can now re-install your Windlace or purchase a new color-matched TMI Windlace. After you complete this, proceed with re-installing your sill plates. This completes the entire Headliner Installation Process.



This illustration depicts the re-installation of the Windlace.



Thank you for choosing TMI, for more information on our product line, please visit our website at , www.tmiproducts.com or feel free to call us at (800)624-7960