



FR3Z-2760-BL



FR3Z-2760-BK

INCLUDES

- 1 - Parking Brake Handle Cover

WARNING!

Always wear gloves and protective eye-wear when working on your vehicle. If any part of this installation seems beyond your level of experience, please seek the help of a professional installer.

TOOLS REQUIRED FOR INSTALLATION

- 2mm Allen Key

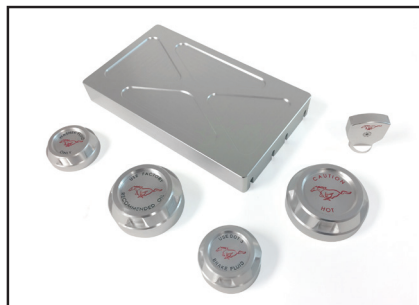
Thank you for choosing this Drake Muscle Cars product for your vehicle. Please read these instructions carefully. Make sure you have the correct parts and proper tools before attempting installation.

1. Make sure the set screw is flush to inside of E-break cover before installing. It should not be sticking in as this will interfere with the handle cover sliding on to the parking brake.
2. With the finger indents facing down, slide the new aluminum parking brake handle cover over the parking brake. It is a tight fit so it will require some force to slide it on. Make sure to firmly slide it on so the release button is completely through the hole on the new handle cover.
3. Tighten the set screw with a 2mm Allen key.
4. Check to make sure the handle is securely in place before driving.

Check out these Drake Muscle Cars products for 2015+ Mustangs



FR3Z-16796-BL Hood lift system



Billet engine caps and fuse box lid



Fig. 1



Fig. 2

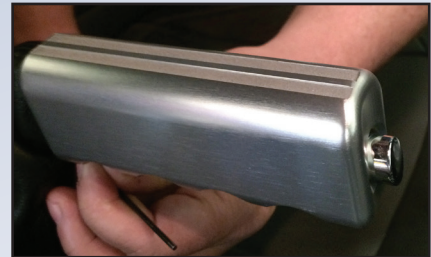
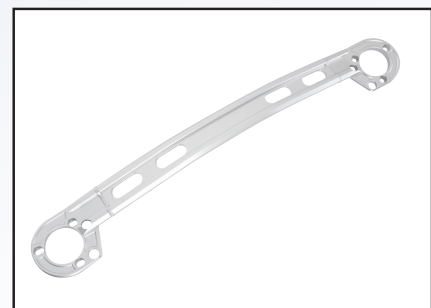


Fig. 3

More Drake Muscle Cars products



5R3Z-2457-9735M Pedal Covers



FR3Z-16A052-BL Strut Tower Brace

Drake Muscle Cars

130 Cassia Way, Henderson, NV 89014
Tel: (702) 853-2060 www.DrakeMuscleCars.com