



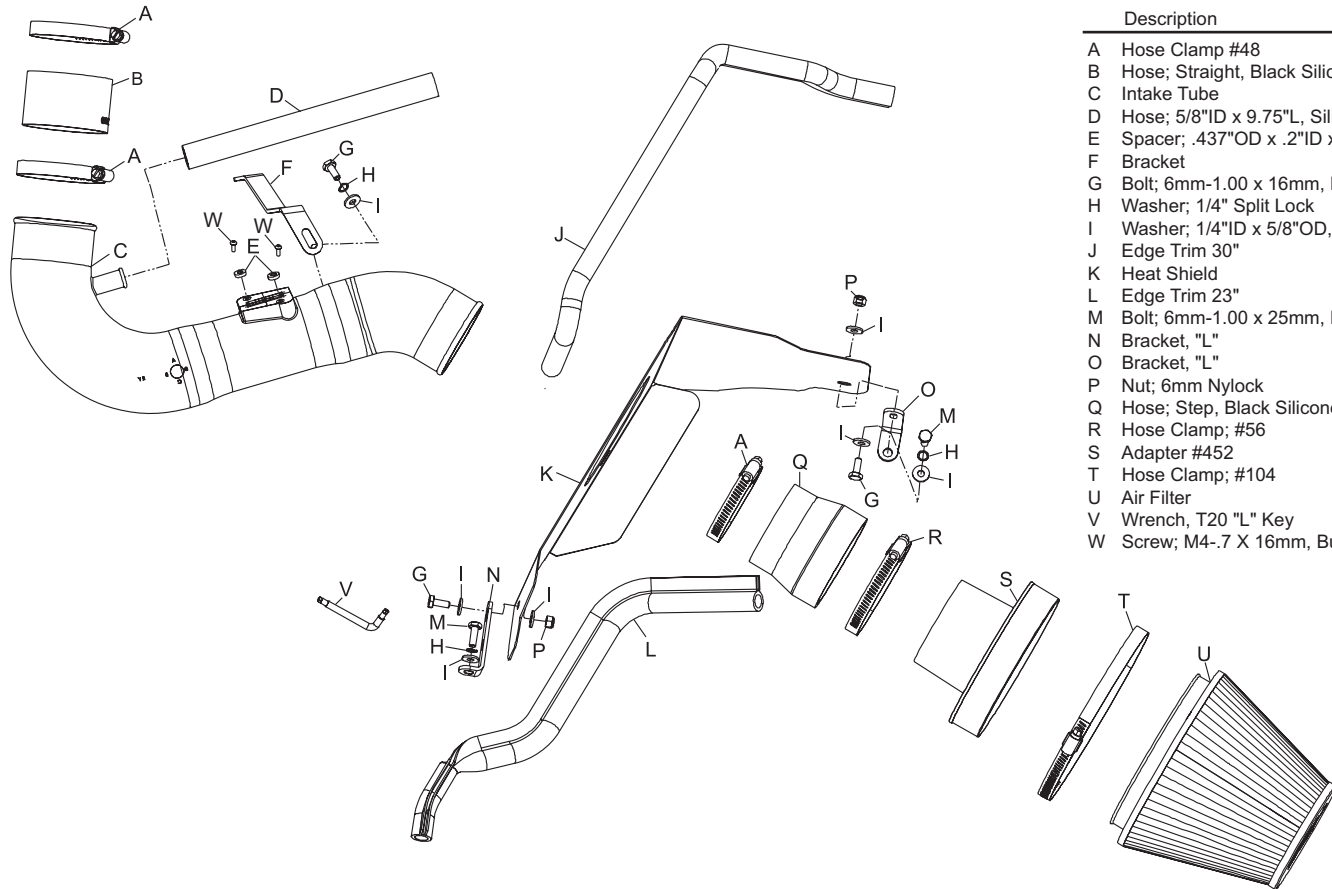
INSTALLATION INSTRUCTIONS

57-2566

FORD 2005-09 MUSTANG V6-4.0L

TOOLS NEEDED:

- Flat Blade Screwdriver
- Ratchet
- Extension
- 8mm Socket
- 10mm Socket
- 15mm Socket
- 10mm Wrench



PARTS LIST:

Description	Qty.	Part #
A Hose Clamp #48	3	08601
B Hose; Straight, Black Silicone	1	08434
C Intake Tube	1	087168
D Hose; 5/8"ID x 9.75"L, Silicone	1	084047
E Spacer; .437"OD x .2"ID x .115"Thk	2	06503
F Bracket	1	010110
G Bolt; 6mm-1.00 x 16mm, Hex	3	07703
H Washer; 1/4" Split Lock	3	08198
I Washer; 1/4"ID x 5/8"OD, Flat	7	08275
J Edge Trim 30"	1	102489
K Heat Shield	1	074038
L Edge Trim 23"	1	102495
M Bolt; 6mm-1.00 x 25mm, Hex	2	07704
N Bracket, "L"	1	07158
O Bracket, "L"	1	070812
P Nut; 6mm Nylock	2	07553
Q Hose; Step, Black Silicone	1	08724
R Hose Clamp; #56	1	08620
S Adapter #452	1	21518
T Hose Clamp; #104	1	08697
U Air Filter	1	RF-1048
V Wrench, T20 "L" Key	1	69801
W Screw; M4-.7 X 16mm, Button SS	2	07793

NOTE: FAILURE TO FOLLOW INSTALLATION INSTRUCTIONS AND NOT USING THE PROVIDED HARDWARE MAY DAMAGE THE INTAKE TUBE, THROTTLE BODY AND ENGINE.

TO START:

1. Turn off the ignition and disconnect the negative battery cable.

NOTE: Disconnecting the negative battery cable erases pre-programmed electronic memories. Write down all memory settings before disconnecting the negative battery cable. Some radios will require an anti-theft code to be entered after the battery is re-connected. The anti-theft code is typically supplied with your owner's manual. In the event your vehicles' anti-theft code cannot be recovered, contact an authorized dealership to obtain your vehicles anti-theft code.



2. Release the red locking tab and then disconnect the mass air sensor electrical connection.



3. Release the red locking tab and then disconnect the mass air sensor electrical connection.



4. Loosen the hose clamps, which secure the intake tube to the throttle body and airbox, then remove the intake tube as shown.



5. Remove the airbox mounting bolt shown.



6. Remove the airbox assembly as shown. **NOTE: K&N Engineering, Inc., recommends that customers do not discard factory air intake.**

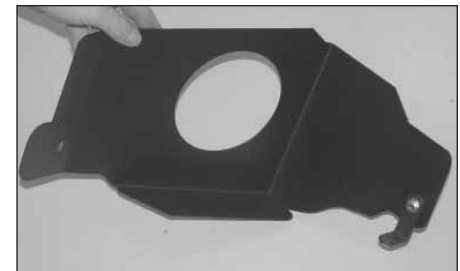


7. Remove the power steering pump bracket-retaining nut shown.

NOTE: Nut will be reused.



8. Install the tube-mounting bracket onto the power steering mounting bracket stud and secure with the nut removed in step #7. **NOTE: Do not completely tighten at this time.**



9. Install the "L" bracket (070812) onto the rear of the heat shield as shown with the provided hardware.



10. Install the "L" bracket (07158) onto the front of the heat shield as shown with the provided hardware.



11. Install the edge trim onto the heat shield as shown. **NOTE: Some trimming of the edge trim may be necessary for proper fit.**



12. Remove the radiator fan shroud mounting bolt shown. **NOTE: This bolt will not be reused.**



13. Install the heat shield and secure with the provided hardware as shown.

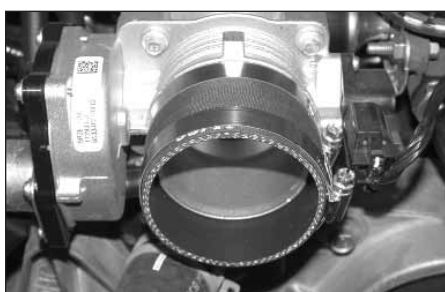
NOTE: The forward mounting bracket will mount to the radiator fan shroud mounting location and the rear bracket will mount to the airbox mounting location.



14. Remove the mass air sensor from the factory airbox with the T20 "TORX" wrench provided.



15. Install the mass air sensor into the K&N® intake tube with the mounting screws and two spacers provided.



16. Install the silicone hose (08434) onto the throttle body with the provided hose clamps as shown.



17. Install the K&N® intake tube into the silicone hose at the throttle body and onto the tube-mounting bracket installed in step #8, secure with provided hardware.



18. Using a razor blade cut the crankcase vent tube 6" from the end as shown.



19. Install the provided crankcase vent hose onto the K&N® intake tube and factory vent hose as shown.



20. Install the air filter onto the filter adapter and secure with the provided hose clamp as shown.



21. Install the silicone hose (08724) onto the air filter assembly and secure with the provided hose clamp as shown.



22. Install the air filter assembly onto the K&N® intake tube as shown and secure with the provided hose clamp.



23. Reconnect the mass air sensor electrical connection as shown.



24. Reconnect the vehicle's negative battery cable. Double check to make sure everything is tight and properly positioned before starting the vehicle.

25. The C.A.R.B. exemption sticker, (attached), must be visible under the hood so that an emissions inspector can see it when the vehicle is required to be tested for emissions. California requires testing every two years, other states may vary.

26. It will be necessary for all K&N® high flow intake systems to be checked periodically for realignment, clearance and tightening of all connections. Failure to follow the above instructions or proper maintenance may void warranty.

ROAD TESTING:

1. Start the engine with the transmission in neutral or park, and the parking brake engaged. Listen for air leaks or odd noises. For air leaks secure hoses and connections. For odd noises, find cause and repair before proceeding. This kit will function identically to the factory system except for being louder and much more responsive.

2. Test drive the vehicle. Listen for odd noises or rattles and fix as necessary.

3. If road test is fine, you can now enjoy the added power and performance from your kit.

4. K&N Engineering, Inc., suggests checking the air filter element periodically for excessive dirt build-up. When the element becomes covered in dirt (or once a year), service it according to the instructions on the Recharger® service kit, part number 99-5050 or 99-5000.

50-STATE STREET LEGAL
K&N CARB EXEMPT K&N

* FREE K&N® decal To register your warranty, please see us online at knfilters.com/register. FREE K&N® decal *