

**Warning:** Please read directions completely before starting. If you have any questions please contact BMPP before beginning your installation. Also please check our website ([bigmikesperformanceparts.com](http://bigmikesperformanceparts.com)) for any updates or changes. Thank You.

**Parts Included:** (1) License Plate mounting bracket Assembly. Includes Base Plate and License Plate Holder.

(2) License Plate mounting Screws: 1/4X20 (5/32 Allen head)

(2) License Plate mounting nuts: 1/4X20 nylon self-locking nuts (7/16 wench size)

(3) Base plate mounting screws: (4) 5.6mmX20mm with washer.

**Tools Needed:** 7mm & 8mm sockets with ratchet Note: 1/4 inch drive preferred but 3/8 will work (but extra caution will be needed when tightening screws)

5/32 Allen wrench, 7/16 wrench

1/8 inch drill bit and drill.

**Step 1: (V-6 & GT)** Insure all parts listed above are accounted for. Note: If at any time during the installation process you need assistance please call (831)663-4849.

**Step 2: (V-6 & GT)** Separate the license plate holder from the base by simply pulling the pull pin ring outward and sliding apart.

#### **V-6 Instructions**

**Step 3: (V-6)** Position the base mount with the tubes towards the front of the car, centered over on the front bumper with the back of plate against the plastic air dam. Note: Tube will be facing down. See figure 1

**Step 4: (V-6)** Once base plate is aligned, carefully drill two pilot holes for the front mounting screws. See figure2.

**Step 5: (V-6)** Using the (2) 5.6X20mm screws secure the front of base plate to the vehicle using the following method. Caution: When tightening the screw extreme care should be taken not to over tighten screw or the hole may become stripped and lose its ability to secure the base plate. Place the screw into the 8mm socket and begin to tighten. Once the screw is flush with the plate stop. Now Tighten screw one half turn and stop.

**Step 6: (V-6)** Now install rear screws using method in step 5. See figure 3

#### **GT Instructions**

**Step 3: (GT)** Remove the two center (4mm) screws using a 7mm socket and ratchet. See figure 1a for location.

**Step 4: (GT)** Now position the base mount with the two tubes towards the front of the car, centered over the two holes where the two 4mm screws were just removed. Note: Tube will be facing down. Using the (2) factory screws secure the base plate in place. See figure 2a

**Step 5: (GT)** Once base plate is secured using the two rear mounting holes, carefully drill two pilot holes for the front mounting screws. See figure3a.

**Step 6: (GT)** Using the (2) 5.6X20mm screws secure the front of base plate to the vehicle using the following method. Caution: When tightening the screw extreme care should be taken not to over tighten screw or the hole may become stripped and lose its ability to secure the base plate. Place the screws into the 8mm socket and begin to tighten. Once the screw is flush with the plate stop. Now Tighten screw one half turn and stop.

**Step 7: (V-6 & GT)** Secure the license plate and frame (optional) to the license plate bracket using the two 1/4 inch bolts and nuts provided. Requires the 5/32 Allen wrench and 7/16 wrench (Not included).

**Step 8: (V-6 & GT)** Slide the license plate rods into the two tubes located on the base plate. Slide the rods into the tubes until the rods hit the pull pin. Simply pull the ring on the pull pin and advance the rods. Release ring and continue to advance rods until the pull pin locks into place. See figure 4. In some occasions the license plate may require a little adjustment to level. Simply pull pin and slide plate out approximately two inches, grab frame at arrows (See figure 5) and rotate. If plate is high on left or right side, rotate high side down slightly and release. Verify alignment and repeat as necessary. Once leveled plate will remain level.

Congratulations!! You have just installed the STON SHO™ front license plate mounting system. Thank You for your purchase.

**Caution:** Bracket lowers ground clearance by approx 1/2 inch.

Remove prior to entering automated car wash

Exercise care when entering or exiting steep driveways or damage will occur

Parking Stops or high curbs, Stop well before or damage will occur

Medium skill level required. If unsure, have bracket installed by your local Ford Dealer or Body shop.

#### Limited Lifetime Warranty (Transferable)

Big Mike's Performance Parts (BMPP) warrants to the original purchaser only that this product will be free of manufacturing defects in material and workmanship for the life of the product to the limitations and exclusions set forth below:

Return product to any authorized dealer. Contact BMPP for the dealer nearest you. Upon examination, BMPP or its representative will, at its sole option and expense, repair or replace any product found to be defective. If product to be replaced via mail, BMPP will return the repaired or replaced unit to you via its usual shipping method from the factory to your address in the United States of America or Canada only. Any shipping costs for addresses outside of the United States or Canada shall be the responsibility of the purchaser.

This warranty is transferable when product is attached to a vehicle

#### REMEDIES FOR BREACH OF WARRANTY.

This Warranty does not include repair for damage caused by improper use or handling, including but not limited to damage caused by accident, mishandling, improper installation, abuse, negligence, or any defect caused by repair to the product by anyone other than BMPP.

This warranty does not cover reimbursement for your costs of removing and transporting the product for warranty service evaluation, or installation of any replacement product provided under this warranty.

This Warranty will be void if the product was not purchased from an authorized dealer or reseller.

THE FOREGOING WARRANTIES ARE EXCLUSIVE AND IN LIEU OF ALL OTHER EXPRESSED AND IMPLIED WARRANTIES. ALL SUCH OTHER WARRANTIES, INCLUDING BUT NOT LIMITED TO IMPLIED WARRANTIES OF MERCHANTABILITY, FITNESS FOR A PARTICULAR PURPOSE AND NON-INFRINGEMENT, WITH RESPECT TO THE PRODUCT. TO THE MAXIMUM EXTENT PERMITTED BY LAW, BMPP SHALL NOT BE RESPONSIBLE FOR ANY INCIDENTAL OR CONSEQUENTIAL DAMAGES EXCEPT TO THE EXTENT PROVIDED (OR PROHIBITED) BY APPLICABLE LAW, EVEN IF BMPP HAS BEEN ADVISED OF THE POSSIBILITY OF SUCH DAMAGES.

Notwithstanding the above, if you qualify as a "consumer" under the Magnuson-Moss Warranty Act, or applicable state laws, then you may be entitled to any implied warranties allowed by law for the Warranty Period. Further, some states do not allow limitations on how

long an implied warranty lasts or allow the exclusion or limitation of consequential damages, so such limitations may not apply to you. This warranty gives you specific legal rights, and you may also have other rights which vary from state to state.

For the name of your nearest authorized BMPP dealer, contact: Big Mike's Performance Parts at (831) 663-4849 or go to [bigmikesperformanceparts.com](http://bigmikesperformanceparts.com)

Please register your product at [bigmikesperformanceparts.com](http://bigmikesperformanceparts.com).

Your Part/SKU Number is SNS 3

Fig 1( V-6)

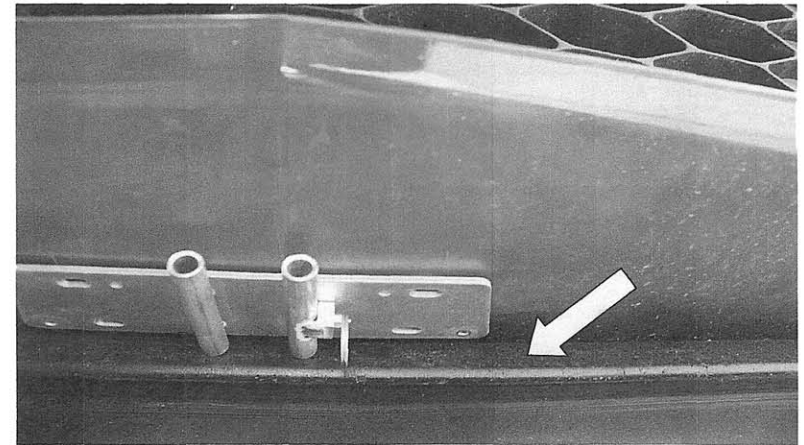


Fig 1a (GT)

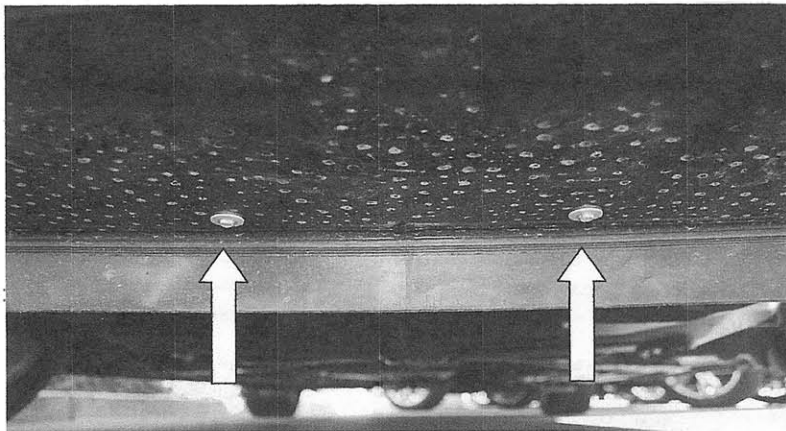


Fig 2a (GT)

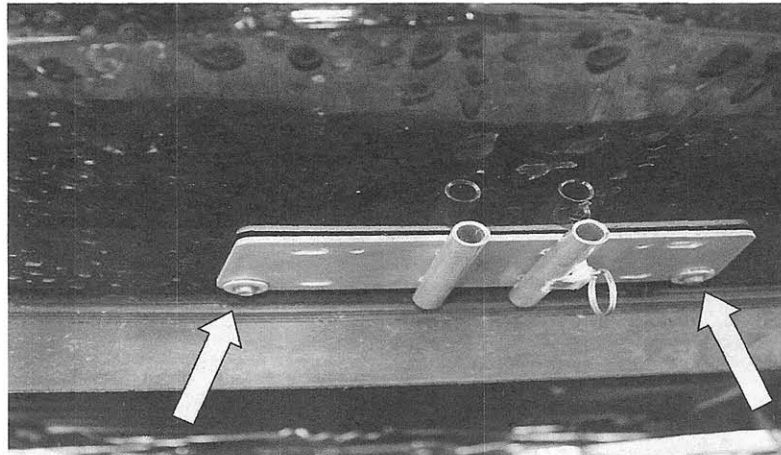


Fig 2 (V-6)

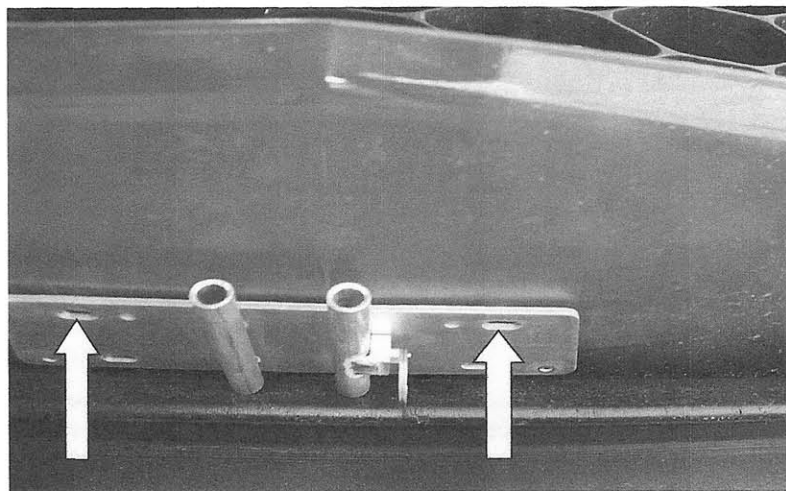


Fig3 (V-6)

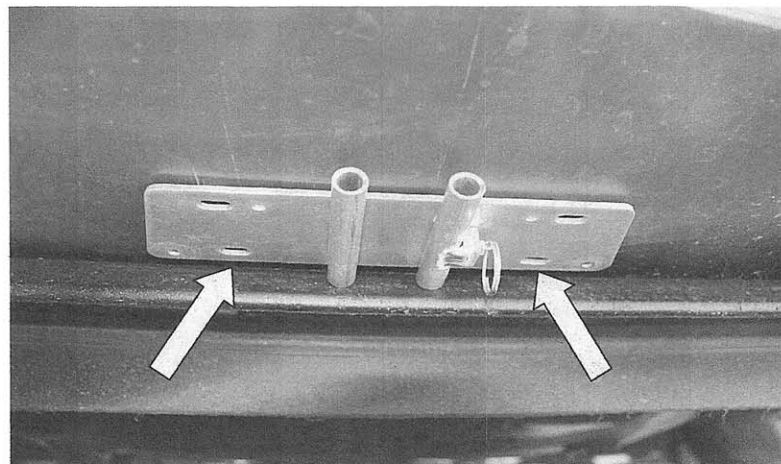


Fig 3a (GT)

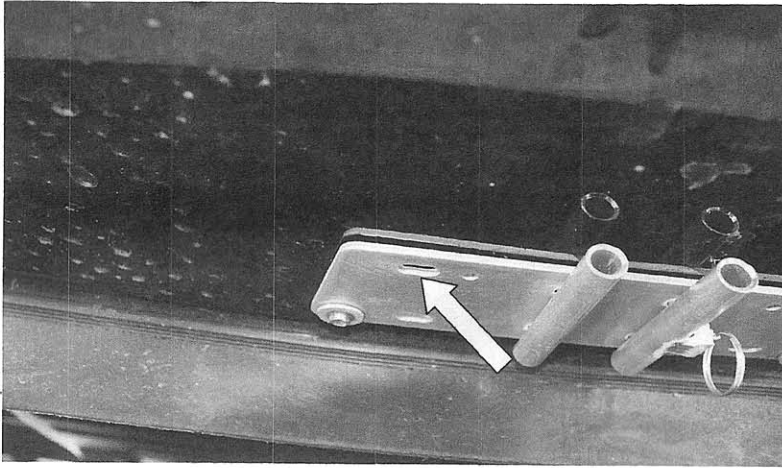


Fig 5 (V-6 & GT)

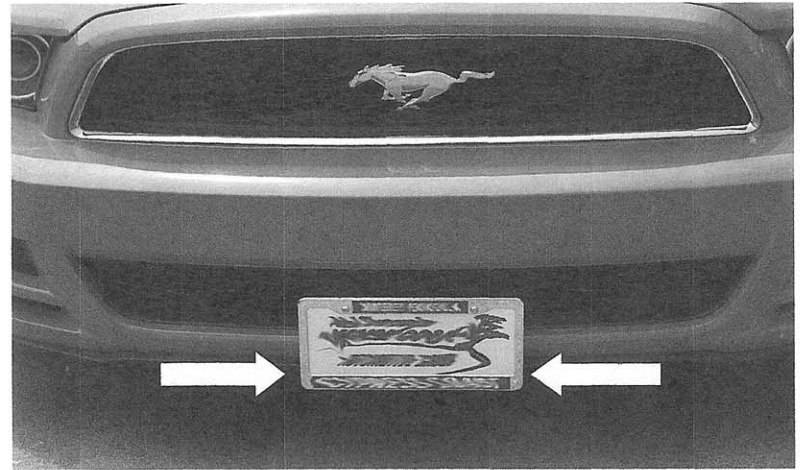


Fig 4 (V-6 & GT)

