

Warning: Please read directions completely before starting. If you have any questions please contact BMPP before beginning your installation. Also please check our website (bigmikesperformanceparts.com) for any updates or changes.

Thank You.

Parts Included: (1) License Plate mounting bracket Assembly. Includes Base Plate and License Plate Holder.
(2) License Plate mounting Screws: 1/4X20 (5/32 Allen head)
(2) License Plate mounting nuts: 1/4X20 nylon self-locking nuts (7/16 wench size)
(3) Base plate mounting screws: (2) 6mm X 75mm bolts with washers, (1) 6mm X 60mm with washer (2) nylon 1^{7/8"} spacers & (1) 1^{1/8"} spacer.

Tools Needed: 7mm & 10mm sockets with ratchet Note: 1/4 inch drive preferred but 3/8 will work (but extra caution will be needed when tightening screws) and a Philip screwdriver.
5/32 Allen wrench & 7/16 wrench
1/4 inch drill bit and drill.

Step 1: Insure all parts listed above are accounted for. Note: If at any time during the installation process you need assistance please call (831)663-4849.

Step 2: Separate the license plate holder from the base by simply pulling the pull pin ring outward and sliding apart.

Step 3: Remove the two center spoiler screws (6mm) using a 7mm socket and ratchet. See figure 1 for location.

Step 4: Now position the base mount with the two holes towards the front of the car, centered over the two holes where the two 6mm screws was just removed. Note: Tube will be facing down. Using the (2) 6mm X 75mm bolts, washers and the (2) 1^{7/8"} nylon spacers secure the base plate in place. See figure 2

Step 5: Once base plate in secured using the two front mounting holes, carefully drill the hole for the rear mounting bolt. Note: You will be drilling one 1/4" hole into the underbody rock deflector panel using the rear hole closest to the front of the bracket and the nylon spacer as a

guide. Caution: Insure you drill the hole straight. See figure3 and 3a. It will not affect looks or value of your vehicle.

Step 6: Using the 6mm X 60mm bolt and secure the rear of base plate to the vehicle using the following method. Slide the bolt and washer through the base plate and secure with nut. Access the top of the bolt through the lower grille opening.

Step 7: Secure the license plate and frame (optional) to the license plate bracket using the two 1/4 inch bolts and nuts provided. Requires the 5/32 Allen wrench and 7/16 wrench (Not included).

Step 8: Slide the license plate rods into the two tubes located on the base plate. Slide the rods into the tubes until the rods hit the pull pin. Simply pull the ring on the pull pin and advance the rods. Release ring and continue to advance rods until the pull pin locks into place. See figure 4. In some occasions the license plate may require a little adjustment to level. Simply grab frame at arrows (See figure5) pull out half way and rotate. If plate is high on left or right side, rotate high side down slightly and release. Lock into place and recheck. Repeat as necessary. Once leveled plate will remain level.

Congratulations!! You have just installed the STO N SHO™ front license plate mounting system. Thank You for your purchase.

Caution: Bracket lowers ground clearance by approx 1/2 inch.

Remove prior to entering automated car wash

Exercise care when entering or exiting steep driveways or damage will occur

Parking Stops or high curbs, Stop well before or damage will occur

Medium skill level required. If unsure, have bracket installed by your local Ford Dealer or Body shop.

Limited Lifetime Warranty (Transferable)

Big Mike's Performance Parts (BMPP) warrants to the original purchaser only that this product will be free of manufacturing defects in material and workmanship for the life of the product to the limitations and exclusions set forth below:

Return product to any authorized dealer. Contact BMPP for the dealer nearest you. Upon examination, BMPP or its representative will, at its sole option and expense, repair or replace any product found to be defective. If product to be replaced via mail, BMPP will return the repaired or replaced unit to you via its usual shipping method from the factory to your address

in the United States of America or Canada only. Any shipping costs for addresses outside of the United States or Canada shall be the responsibility of the purchaser.

This warranty is transferable when product is attached to a vehicle

REMEDIES FOR BREACH OF WARRANTY.

This Warranty does not include repair for damage caused by improper use or handling, including but not limited to damage caused by accident, mishandling, improper installation, abuse, negligence, or any defect caused by repair to the product by anyone other than BMPP.

This warranty does not cover reimbursement for your costs of removing and transporting the product for warranty service evaluation, or installation of any replacement product provided under this warranty.

This Warranty will be void if the product was not purchased from an authorized dealer or reseller.

THE FOREGOING WARRANTIES ARE EXCLUSIVE AND IN LIEU OF ALL OTHER EXPRESSED AND IMPLIED WARRANTIES. ALL SUCH OTHER WARRANTIES, INCLUDING BUT NOT LIMITED TO IMPLIED WARRANTIES OF MERCHANTABILITY, FITNESS FOR A PARTICULAR PURPOSE AND NON-INFRINGEMENT, WITH RESPECT TO THE PRODUCT. TO THE MAXIMUM EXTENT PERMITTED BY LAW, BMPP SHALL NOT BE RESPONSIBLE FOR ANY INCIDENTAL OR CONSEQUENTIAL DAMAGES EXCEPT TO THE EXTENT PROVIDED (OR PROHIBITED) BY APPLICABLE LAW, EVEN IF BMPP HAS BEEN ADVISED OF THE POSSIBILITY OF SUCH DAMAGES.

Notwithstanding the above, if you qualify as a "consumer" under the Magnuson-Moss Warranty Act, or applicable state laws, then you may be entitled to any implied warranties allowed by law for the Warranty Period. Further, some states do not allow limitations on how long an implied warranty lasts or allow the exclusion or limitation of consequential damages, so such limitations may not apply to you. This warranty gives you specific legal rights, and you may also have other rights which vary from state to state.

For the name of your nearest authorized BMPP dealer, contact: Big Mike's Performance Parts at (831) 663-4849 or go to bigmikesperformanceparts.com

Please register your product at bigmikesperformanceparts.com.

Your Part/SKU Number is SNS 6

Fig 1



Fig 2

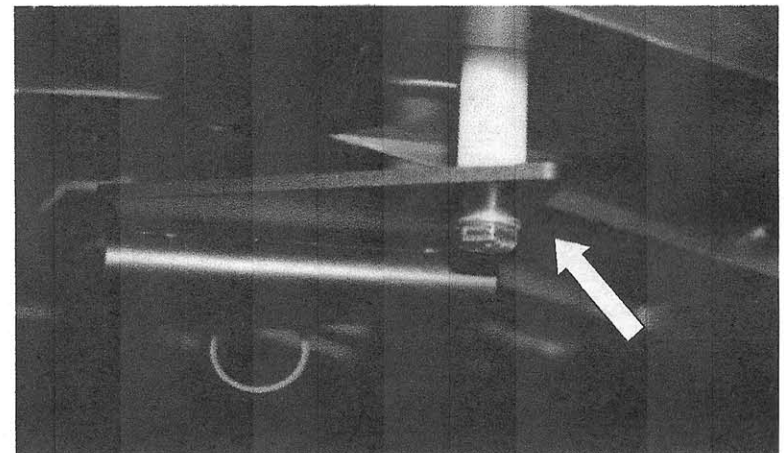


Fig3

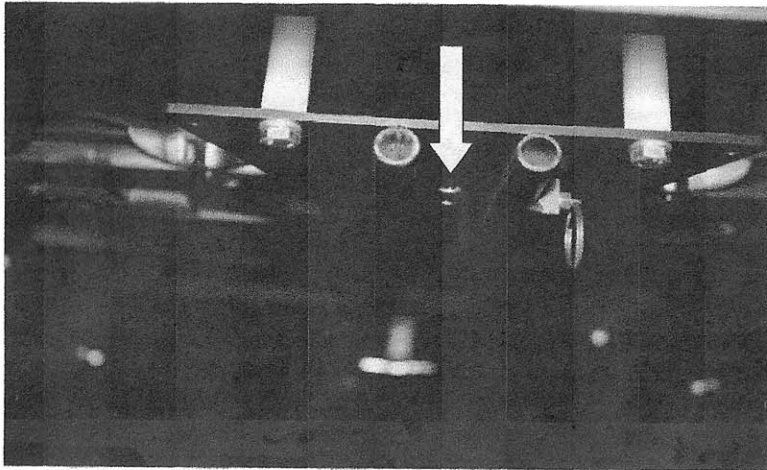


Fig 4

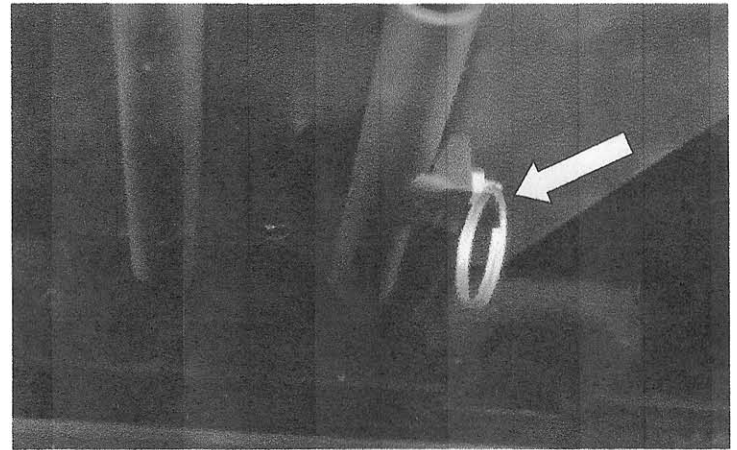


Fig 3a

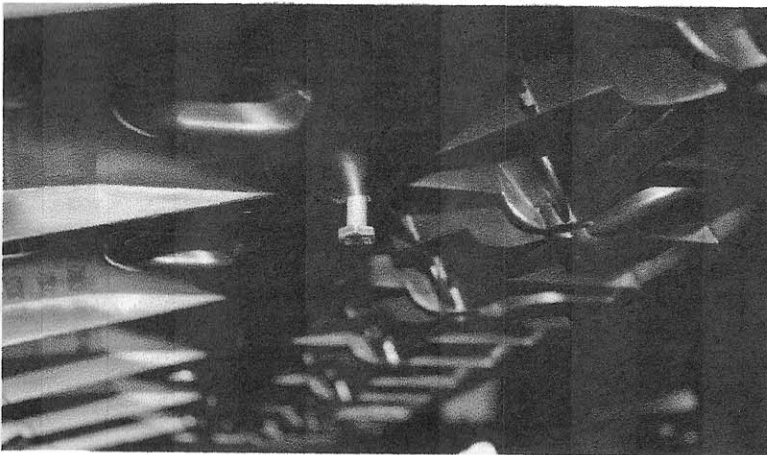


Fig 5

