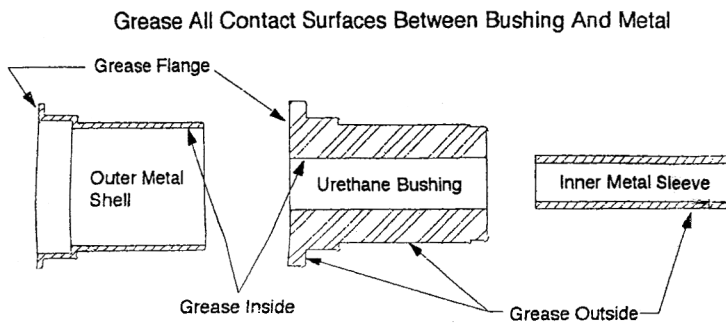


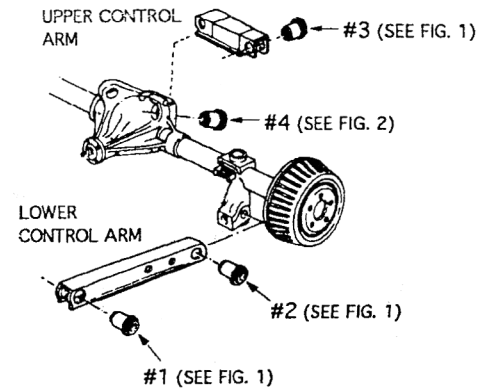
INSTALLATION INSTRUCTIONS FOR CONTROL ARM BUSHINGS WITHOUT OUTER SHELLS

- 1) CONTROL ARM BUSHINGS ARE DESIGNED TO REPLACE THE RUBBER PORTION OF THE ORIGINAL BUSHING (AND INNER SLEEVE WHEN SUPPLIED). THEREFORE THE ORIGINAL OUTER METAL SHELLS, WASHERS, SPACERS AND SPECIAL WASHERS AND SLEEVES THAT ARE USED WITH CAM BOLT TYPE BUSHINGS MUST BE REUSED. ALSO IF INNER METAL SLEEVE IS NOT INCLUDED IN KIT THEN THE ORIGINAL INNER SLEEVE MUST BE REUSED.
- 2) DISASSEMBLE CONTROL ARM, BEING CAREFUL NOT TO DAMAGE ANY PARTS THAT ARE TO BE REUSED. REMOVAL OF THE ORIGINAL RUBBER BUSHING IS BEST ACCOMPLISHED BY BURNING AWAY THE ORIGINAL RUBBER. PAY CAREFUL ATTENTION TO OTHER ADJOINING PARTS THAT COULD BE DAMAGED BY HEAT. **CAUTION-THIS SHOULD BE DONE BY A QUALIFIED SPECIALIST AS IT IS EXTREMELY DANGEROUS.**
- 3) REMOVE ALL OF THE ORIGINAL RUBBER BUSHING MATERIAL AND CLEAN CONTACT SURFACES. THIS CAN BE DONE BY WIRE BRUSHING, SANDING OR SIMILAR PROCESS.
- 4) DISASSEMBLE NEW URETHANE BUSHINGS. LIGHTLY GREASE BUSHINGS AS DIAGRAM INDICATES WITH SPECIAL TEFLON GREASE INCLUDED IN KIT. IF MORE GREASE IS NEEDED OBTAIN TEFLON GREASE FROM YOUR DEALER (PART #19-1750). USE ONLY OUR SPECIAL TEFLON GREASE.
- 5) INSTALL NEW URETHANE BUSHINGS AND ALL NECESSARY WASHERS, SPACERS AND SLEEVES. TORQUE TO FACTORY SPECIFICATIONS.
- 6) RE-ALIGN VEHICLE.
- 7) AFTER DRIVING VEHICLE FOR APPROXIMATELY 50 MILES, RE TORQUE BUSHING RETAINING NUTS AND OR BOLTS TO BE SURE THEY HAVE NOT LOOSENED DUE TO THE BUSHINGS SETTLING IN. REPEAT THIS PROCEDURE AFTER VEHICLE IS RACED, DRIVEN OFFROAD OR DRIVEN IN ABUSIVE CONDITIONS.

CONTROL ARM BUSHING DIAGRAM



TYPICAL REAR SUSPENSION (THRUST WASHER LOCATION DIAGRAM)



THRUST WASHER INSTALLATION INSTRUCTIONS

- 1) THRUST WASHERS PREVENT THE SIDE TO SIDE MOVEMENT OF THE CONTROL ARM WHICH MAY OCCUR DURING CORNERING. LOCATE YOUR KIT# AND USE THE INSTRUCTIONS TO INSTALL THRUST WASHERS IN THEIR CORRECT LOCATIONS/POSITIONS.
- 2) LIGHTLY GREASE EDGES OF THRUST WASHERS THAT CONTACT METAL.

FIG. 1 POSITIONING DIAGRAM FOR THRUST WASHER

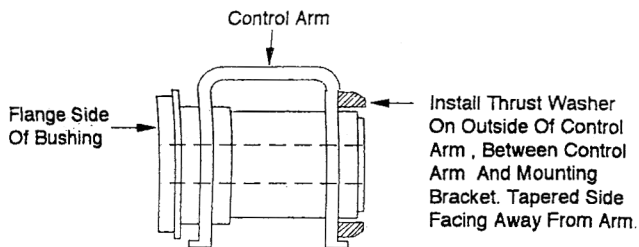
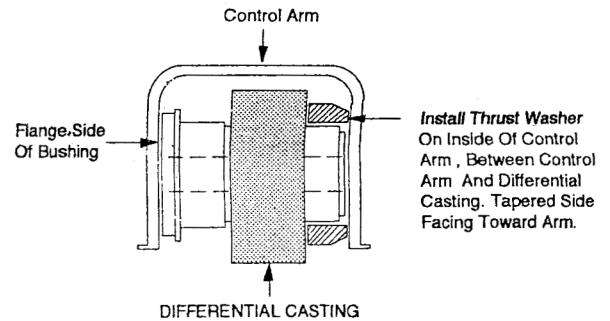


FIG. 2 POSITIONING DIAGRAM FOR THRUST WASHER



KIT #6-301 THRUST WASHER LOCATION			KIT #6-302 THRUST WASHER LOCATION			KIT #6-303 THRUST WASHER LOCATION		
LOCATION #1 64072			LOCATION #1 64106			LOCATION #1 64072		
LOCATION #2 64073			LOCATION #2 64073			LOCATION #2 64073		
LOCATION #3 64071			LOCATION #3 64071			LOCATION #3 64071		
LOCATION #4 64050			LOCATION #4 64050			LOCATION #4 64050		
KIT #6-301 PARTS LIST			KIT #6-302 PARTS LIST			KIT #6-303 PARTS LIST		
PART #	DESC.	QTY.	PART #	DESC.	QTY.	PART #	DESC.	QTY.
TUBE	HI-TECH GREASE	4	TUBE	HI-TECH GREASE	4	TUBE	HI-TECH GREASE	4
SLV-60672	3/4" X 2.900 "	4	SLV-60672	3/4" X 2.900 "	4	SLV-60672	3/4" X 2.900 "	4
SLV-60673	3/4" X 2.400 "	4	SLV-60673	3/4" X 2.400 "	4	SLV-60673	3/4" X 2.400 "	4
U-64050	T-WASHER	2	U-64050	T-WASHER	2	U-64050	T-WASHER	2
U-64071	T-WASHER	2	U-64071	T-WASHER	2	U-64071	T-WASHER	2
U-64072	T-WASHER	2	U-64106	T-WASHER	2	U-64072	T-WASHER	2
U-64073	T-WASHER	2	U-64073	T-WASHER	2	U-64073	T-WASHER	2
U-64049	BUSHING	2	U-64049	BUSHING	2	U-64049	BUSHING	2
U-64074	BUSHING	2	U-64105	BUSHING	2	U-64104	BUSHING	2
U-64075	BUSHING	2	U-64075	BUSHING	2	U-64075	BUSHING	2
U-64076	BUSHING	2	U-64076	BUSHING	2	U-64076	BUSHING	2