



Driven Beyond Perfection

STANDARD OUTSIDE MIRRORS INSTALLATION GUIDE

APPLICATION: 65-66 Standard Outside Mirrors

Thank you for purchasing this "show quality," 1964-66 outside mirror. This outstanding reproduction by Scott Drake features flawless chrome and a perfect fit. Kit includes mounting screws and gasket. Made in the U.S.A. MCA APPROVED!

PREPARATION:

Cut out the template along the dotted lines. Fit the vent window post notch on the template to the vent window post and tape in place. Use a center punch or other sharp object (not a nail) to mark the hole position. Drill two 1/8" holes and mount the mirror with the self-tapping sheet metal screws which are included.

Note: The template may not align perfectly. For your own protection, make sure your mirror head clears the vent window when it is open.



SATISFACTION GUARANTEE:

If you are not happy with this product for any reason or found product to be defective in manufacturing, simply return it to Scott Drake Enterprises, Inc. within 30 days of purchase and we will replace it - no questions asked. We stand behind our products one hundred percent, so you can sit behind the wheel with pride.

** Please call Scott Drake Customer Service for a Return Authorization (RA) before returning any product. Proof of purchase and dated receipt must be present with any return. All returned products are tested and if found to be damaged by the installer, no replacement will be issued. You pay the the cost to ship to us, we pay for the return shipping. Guarantee does not include any labor and/or tax charges incurred.*

To place an order, or for current pricing, call your authorized Scott Drake dealer.

For a list of dealers in your area, or for any other questions about Scott Drake products, visit www.scottdrake.com or call our customer service department toll free:

1.800.999.0289

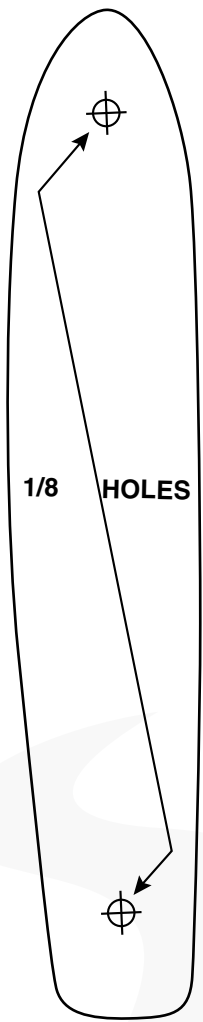
Mon - Thurs 7:00 a.m. to 5:00 p.m.
Friday 7:00 a.m. to 4:30 p.m. - PST



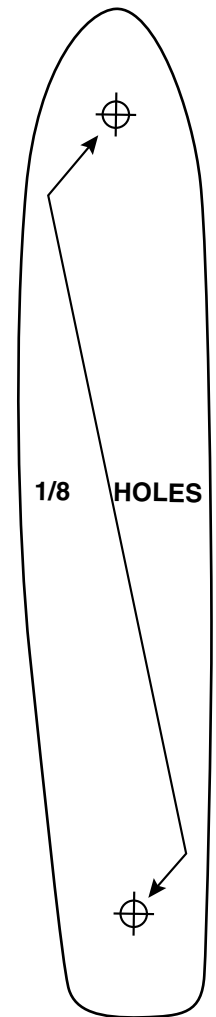
130 Cassia Way
Henderson, NV 89014

t: 702.853.2060
f: 702.853.2062

Left Side Template



Right Side Template



Note: This template may not align perfectly. For your own protection, make sure your mirror head clears the vent window when it is open.