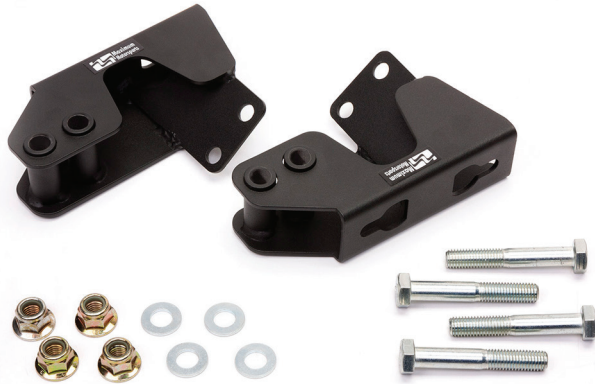


MM Stock Location Swaybar Mounts for Mm5KM-8 (Mm5FSB-21)



This Kit Contains

Description	QTY
Stock Location Front Swaybar Mount, Driver Side	1
Stock Location Front Swaybar Mount, Passenger Side	1
Nylock Flange Nut, M12-1.75	4
Hex Cap Screw Bolt M12-1.75 x 75mm	4
Flat Washer M12 Screw Size, 24mm OD, 2.3mm-2.7mm Thick	4
Installation Instructions	1

Maximum Motorsports' Stock Location Swaybar Mounts work in conjunction with Maximum Motorsports' Lightweight Radiator Core Support (Mm5KM-8) for 2005-2014 Mustangs. Stronger and lighter with welded-steel construction and a corrosion-preventing, powdercoated finish to complete the package.

Read all instructions before beginning work. Following instructions in the proper sequence will ensure the best and easiest installation.

Required Tools

- Standard assortment of hand tools
- Torque wrench

Installation Time

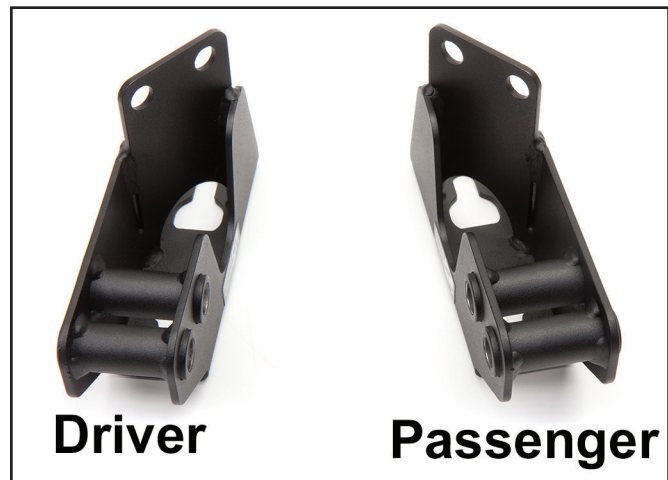
Shop: 0.25 Hours

Home Mechanic: 0.25 Hours

Supplemental Installation Notes

- These instructions assume that the Mm5FSB-21 Swaybar Brackets are being installed at the same time as the Mm5KM-8 Radiator Core Support.

Component Identification



Installation

Follow the instructions for installing the Mm5KM-8 Radiator Core Support until you are told to install the swaybar brackets.

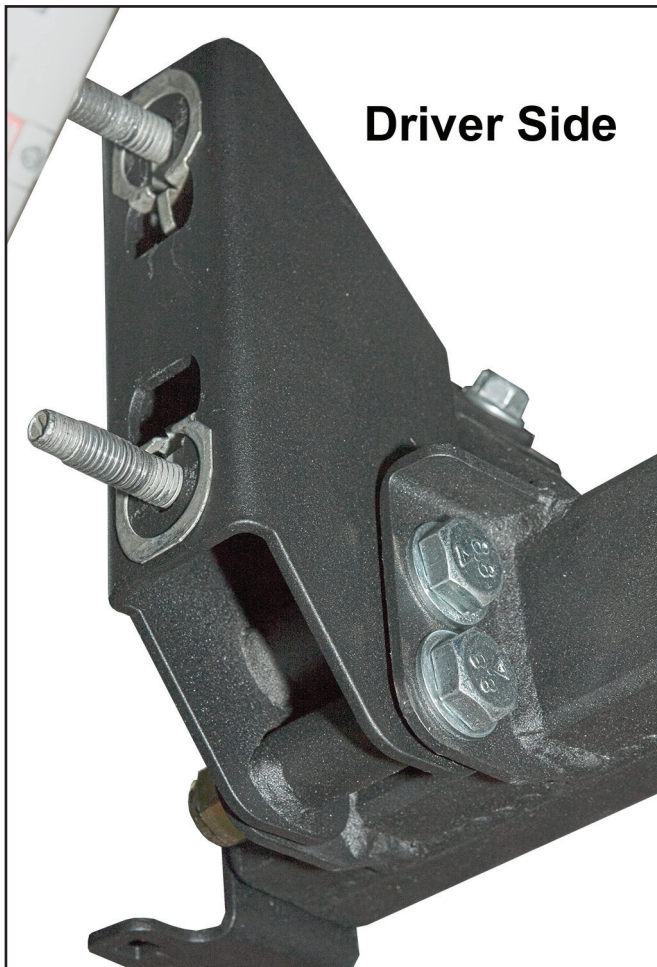
1. Install the OEM swaybar mounting hardware into the brackets. The longer of the bolts goes on the top.
2. Begin with the driver side. Slide the bracket into position.

NOTE: The brackets are designed to fit tightly into the Core Support.

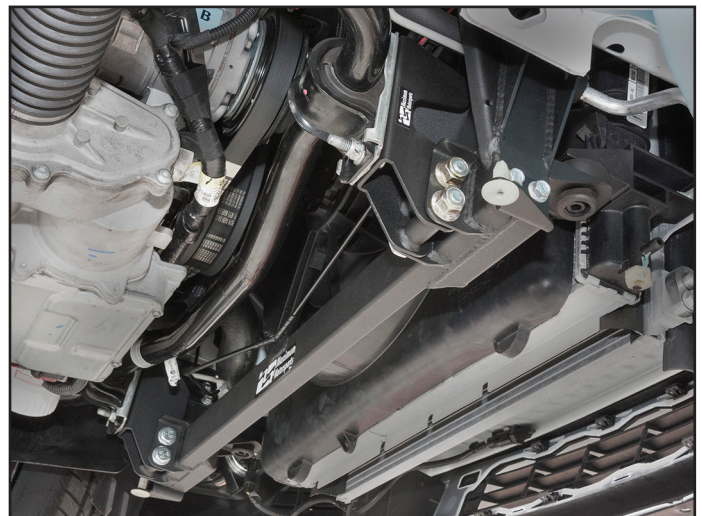
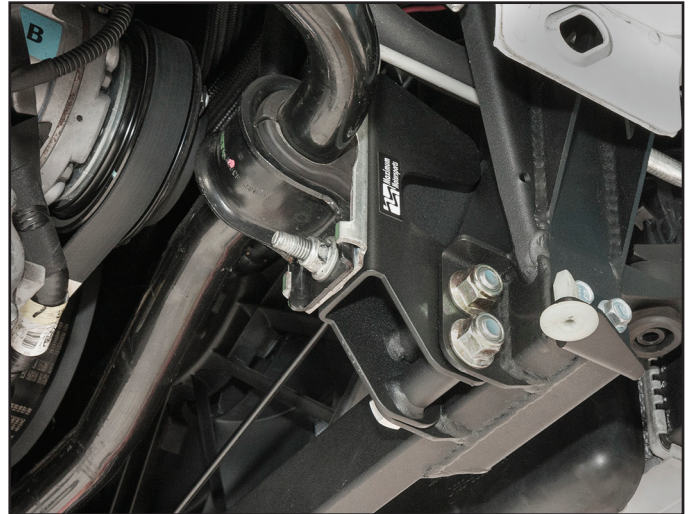
3. Install 2 of the 4 provided 8mm flange bolts into the top of the swaybar brackets. Do not tighten.

NOTE: The 8mm flange bolts are included with the Mm5KM-8 Radiator Core Support.

4. Align the lower two mounting holes on the brackets with the holes in the Core Support.
5. Install 2 of the 4 provided 12mm bolts with washers from the inboard side of the brackets.
6. Install 2 of the 4 provided 12mm nuts onto the bolts. Do not tighten.
7. Torque the 8mm flange bolts to 22 Nm (16 lb-ft).
8. Torque the 12mm hardware to 75 Nm (55 lb-ft).



9. Repeat Steps 2 through 8 on the passenger side.
10. Install the swaybar and mounting brackets onto the new MM Swaybar Mounts. Torque the nuts to 70 Nm (52 lb-ft).



11. Continue with the instructions for installing your Mm5KM-8 Core Support.