

1979-93 Roll Bar (MMRB-1.1 to 1.7)

Read all instructions before beginning work. Following instructions in the proper sequence will ensure the best and easiest installation.



The Maximum Motorsports RB-1.1 to -1.7 Roll Bars are made from 1-3/4" x 0.134" wall DOM tubing. The harness brace, on models so equipped, is 1-1/2" x 0.134" wall DOM. Mounting pads and reinforcing plates are all 6" x 6" x 1/8". The versions with removable swing-out door bars allow easy access for daily driven cars.

With MM's innovative design the rear braces bolt to the main hoop, which holds them in the correct position so they can be welded while outside of the car. This unique design saves you the time and effort of stripping the interior of your car to protect it from welding sparks

NOTE: MM Roll Bars are shipped uncoated. For best results, we suggest that you complete the installation, then remove the roll bar for either painting or powdercoating, and reinstall. That way you will avoid wear and tear on your finish while drilling holes.

NOTE: The MM RB-1.1 to -1.7 Roll Bars are NOT legal for NHRA Competition use. If you plan to drag race your car in sanctioned NHRA or NMRA competition events, please consult with the Maximum Motorsports sales staff to choose one of our NHRA-legal Roll Bar offerings.

NOTE: These instructions cover several different Roll Bars. Some steps may not apply to your installation.

1. Remove the front seats, rear seats, the 2 mounting bolts for each seat belt (on the rocker panel and the B-pillar), the rocker trim panel, and the kick panel trim forward of the doors. *Coupees*: remove the plastic trim surrounding the rear quarter windows and the insulation behind this panel. *Hatchback*: remove only the driver-side trim surrounding the rear quarter windows and the insulation behind it.
2. Pull up the rear, outer corners of the carpet and pull them towards the center console. *TIP: Use some type of clamp or tape to hold the carpet to the seat belts.*



3. Remove excess body seam sealer in the corner where the main hoop mounting pads will rest on the floor pan. *Tip: Use a hammer and sharp chisel to remove seam sealer.*



4. Remove the sound deadening on the rear inner wheel well where the rear brace mounting pads will rest.
5. *Coupe*: bolt both rear braces to the main hoop. Use the 2 1/4" bolts and Nylock nuts. *Hatchback*: bolt the drivers side rear brace to the main hoop. Use a 2-1/4" bolt and Nylock nut.



Be sure to attach the driver's and passenger's side braces to their respective sides. (Pass. side shown)

6. Place the main hoop on the ground on the passenger side of the car in the correct orientation (Coupe is shown).



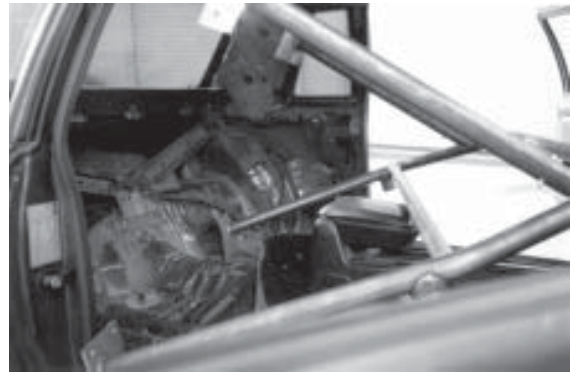
7. Tip the hoop forward.
8. Carefully place the driver's side of the roll bar into the passenger seat area. *TIP: Be very careful not to hit and damage the interior and body of the car with the mounting pads when maneuvering the roll bar into place.*



9. Maneuver the driver's side of the main hoop up and over the center console, keeping the rear-mounting pad behind the center console.



10. Move the driver's side mounting pads into the left rear seat area as you swing the passenger's side of the hoop into the car.



11. Tilt the main hoop upwards and rearward to clear the steering wheel. TIP: Tilt the mirror upwards and remove the dome light and sun visors.



12. Pull the main hoop forward so the mounting pads are about 8" – 10" forward of the rear seat bulkhead.



13. Keeping the main hoop mounting pads in about the same forward position, tilt the main hoop rearwards so the rear brace mounting pads move towards the rear wheel well housings.



14. Slide the main hoop rearwards so all mounting pads are in the correct position. The main hoop mounting pads should be centered side to side and flush with the rear seat bulkhead. *Hatchback:* The main hoop with the drivers side rear brace will set in the car as a tripod.



15. Pull up the carpet along the rocker panel and forward of the doors for the installation of the door bars. Remove sound deadening from the mounting area.



16. Slide the door bars into their mounting sockets on the main hoop, making sure that they are fully seated. *Swing-out door bars:* insert the door bar tube into the floor socket, then insert the door bar in between the tabs on the main hoop. Put the quick-pins into place.



For RBO-LB1 Low Mount Door Bar Option:

NOTE: Car removed for photo clarity. Perform this procedure with the Main Hoop in the vehicle.

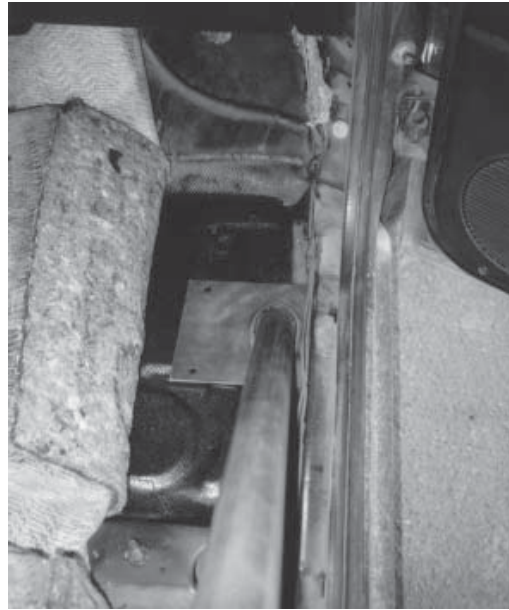
With the Door Bar rotated so that the mounting pad is up off the floor, slide the end of the Door Bar into the mounting cup on the Main Hoop.



Rotate the door bar so that the Mounting Pad sits flush on the floor of the car.



17. The door bar mounting pads should be flush with the rocker panel. *Swing-out door bars:* the edge of the mounting plate which the socket tube is closest to, is the edge to place next to the rocker panel.



18. Close the doors and check for armrest clearance. The door bars may press lightly against the armrests. *TIP#1: To gain more armrest clearance, the door bars can be angled inward slightly at the front, but this may decrease the available room for the seat and passengers. TIP#2: If the door bars contact the arm rest, you can heat up the arm rest with a heat gun and close the door. The arm rest will mold to match the shape of the door bar. You may have to repeat this procedure several times. Be careful not to apply too much heat.*

19. Making sure that all mounting pads are in their correct positions, mark and drill the holes for the main hoop, except for the holes on the downward bent portions of the mounting plates. *Check the bottom side of the car before drilling (fuel lines may need to be moved slightly).*



20. Place the backup plate in position and put three bolts in place, but do not tighten.
21. *Coupe*: mark and drill the holes for the rear braces. *Hatchback*: Mark and drill the holes for the Driver side rear brace only. The Passenger side holes will be marked and drilled in Step 35.
22. Place the backup plate in the rear wheel well and mark the location for the 2 outboard holes and drill.
23. Using the two holes you've just drilled, bolt the backup plates for the rear braces in place. Mark and drill the remaining two inboard holes.
24. Put all bolts in place for the rear mounting pads, but do not fully tighten.
25. Tighten the 3 bolts at each mounting plate of the main hoop, then mark and drill the fourth hole (on the bent portion of the mounting plate) through the backup plates.
26. Install and tighten the remaining bolts for both main hoop mounting plates.
27. Tighten the bolts for the rear braces. *Swing-out door bars*: Skip steps 28 and 29. Instead, insert the quick pins to secure the door bars to the main hoop.
28. Mark the door bars at the main hoop socket for their mounting bolts. Remove and drill 3/8" holes for the attachment bolts.



29. Place the door bars into position and insert the 2 1/2" bolts at the main hoop.
NOTE: The provided 3/8" x 2 1/4" long G5 bolts are to be used in place of the 3/8" x 2 1/2" long G5 bolts with the Low Mount Door Bar option.
30. Mark and drill the holes for the door bar mounting pads.
31. Position the backup plates and insert bolts. Tighten.

32. *Hatchback*: Place the piece of PVC tube onto the passenger side rear brace insert. Slide the PVC down to the plastic panel to determine where to trim the plastic for the rear brace (see photos). On later model cars this location is at the bottom of a speaker hole.



33. Remove the door bars.
34. Remove the main hoop from the car.
35. *Hatchbacks*: remove the drivers side rear brace. Install the passenger side rear brace. Remove the passenger side rear quarter plastic panel. Install the driver side rear quarter plastic panel. Place the roll bar back into the car (repeat steps 6-17, as applicable) and mark and drill Passenger side rear brace mounting holes as detailed in Steps 22-27. Now use the PVC tube on the driver side to locate where the plastic panel needs to be trimmed. Mark the plastic. Remove the roll bar from the car.
36. *Hatchback*: Remove both rear plastic panels from the car. Trim the plastic using your markings. Cut out the holes: a large holesaw in a drill or a sharp knife work well. On earlier model cars the plastic panels will also need to be sliced from the hole down to the edge. This allows installation of the panel after the rear braces have been welded to the main hoop. On later model cars the mounting pads of the rear braces can be inserted through the speaker holes.

37. Have a qualified welder use either the MIG or TIG welding process to weld the rear braces to the main hoop. The stubs that the rear braces bolt to are there to properly locate the rear braces, they are not structural. Take care to have the rear braces welded to the main hoop itself, and not simply to the locating stubs. Take care to keep warpage to a minimum. For strong welds, welding must be free of any slag and/or porosity.
38. If desired, place a protective coat of paint or powdercoating on your roll bar.
39. Reattach the seat belts to the B-pillars.
40. *Coupe*: Reinstall the plastic panels surrounding the rear quarter windows.
41. Place the roll bar back into the car (steps 6-17).
42. *Hatchback*: Position the rear plastic onto the rear braces before bolting the roll bar in place.
43. Tighten the bolts for the main hoop in an even pattern.
44. Tighten the bolts for the rear braces in an even pattern.
45. Attach the door bars to the main hoop. *Bolt-in door bars*: Insert the door bar into the mounting socket on the main hoop. Install the 2-1/2" long bolts, but do not tighten yet. *Swing-out door bars*: Insert the quick pins at the main hoop before tightening the floor mounting pad bolts. If the door bar is misaligned at the main hoop after tightening all mounting pad bolts, remove the quick pins, open the door bar, and lift up or push down on it in the appropriate direction to move the floor socket to a better position.
46. Hold the backup plates in position, and tighten the bolts that attach the door bar to the floor in an even pattern.
47. Tighten the bolts holding the door bars to the main hoop.
48. Trim the carpet to accommodate the main hoop and the door bars.
49. Reinstall the carpet, seats, etc.

This kit includes:

- 1 Main Hoop
- 1 Driver and Passenger Side Rear Brace
- 1 Driver and Passenger Side Door Bar (except RB-1.1, -1.2, & -1.3)
- 6 Backup Plate
- 2 3/8" x 2-1/4" G5 Bolt
- 2 3/8" x 2-1/2" G5 Bolt (or 2 quick pins for 1.4 & 1.7)
- 24 3/8" x 1" G5 Bolt
- 28 3/8" G5 Nylock Nut (only 26 nuts for 1.4 & 1.7)
- 48 3/8" G8 Flat Washer
- 1 PVC Pipe

NOTE: Some kits may include additional hardware not required for the installation of your particular roll bar.