



### **STJ7113**

## **1979-2004 UPPER TORQUE BOX KIT**

### **PARTS LIST**

- (4) 3/8-16 x 1 1/4" Bolt (4) 3/8-16 Lock Nut
- (4) Steel Spacers
- (4) 1/2-13 x 4" Bolt (4) 1/2-13 Locknut

### INSTALLATION:

- Remove both sections of rear seats.
- Heed all safety cautions when jacking the vehicle, i.e. blocking front wheels and jack stands for support. Jack stands should be positioned under the vehicle's frame rails allowing the rear end to hang freely.
- Place another Jack stand under the rear end housing to prevent it from falling and disconnect the top of your rear shocks.
- Continue to keep the jack under the rear end housing (for stability and prevention from pulling on brake lines) and lower the rear end so you can disconnect the upper control arms from the chassis.
- Drill, as *straight as possible*, a 1/2" hole straight up through the supplied 1/2" hole in the top of the upper box and through your inner floor pan. (Fig. 1)
- Very important to drill and install in numerical order as designated (Fig. 2)
- ....Holes #1, #3 and #4 *must* be drilled from underside of car.

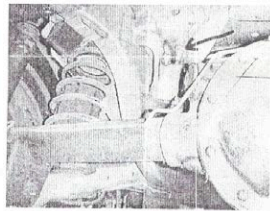


Figure #1

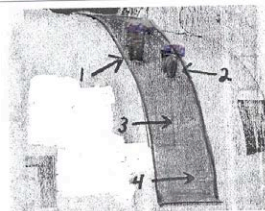


Figure #2

If welding is intended, then it is necessary to remove the sound deadening material from the inside floor pan of your vehicle around the area that the inside curved floor plate will sit on before bolting in. (Fig. 3)

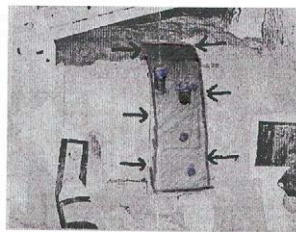


Figure #3

- While inside the vehicle, align the inside curved floor plate with the hole just drilled. Insert a 1/2" bolt with the tapered spacer through the hole. Have a 2nd individual slip the lower support bracket into place and install a locknut. Lightly tighten the nut and bolt.
- While inside the vehicle, drill the other 1/2" hole down through the floor out the bottom of the lower support bracket. Install the bolt and locknut and tighten lightly.
- From under the car, drill through the upper 3/8" hole until you've gone all the way through the inner floor plate. Install the 3/8" bolt and locknut and light tighten. Repeat this on the lower 3/8" hole.
- Tighten all bolts and reinstall your control arms, shocks and rear seat.

**THIS WE ASSUME NO LIABILITY FOR DAMAGE< INJURY OR DEATH ARISING FROM THE INSTALLATION OF PRODUCT**