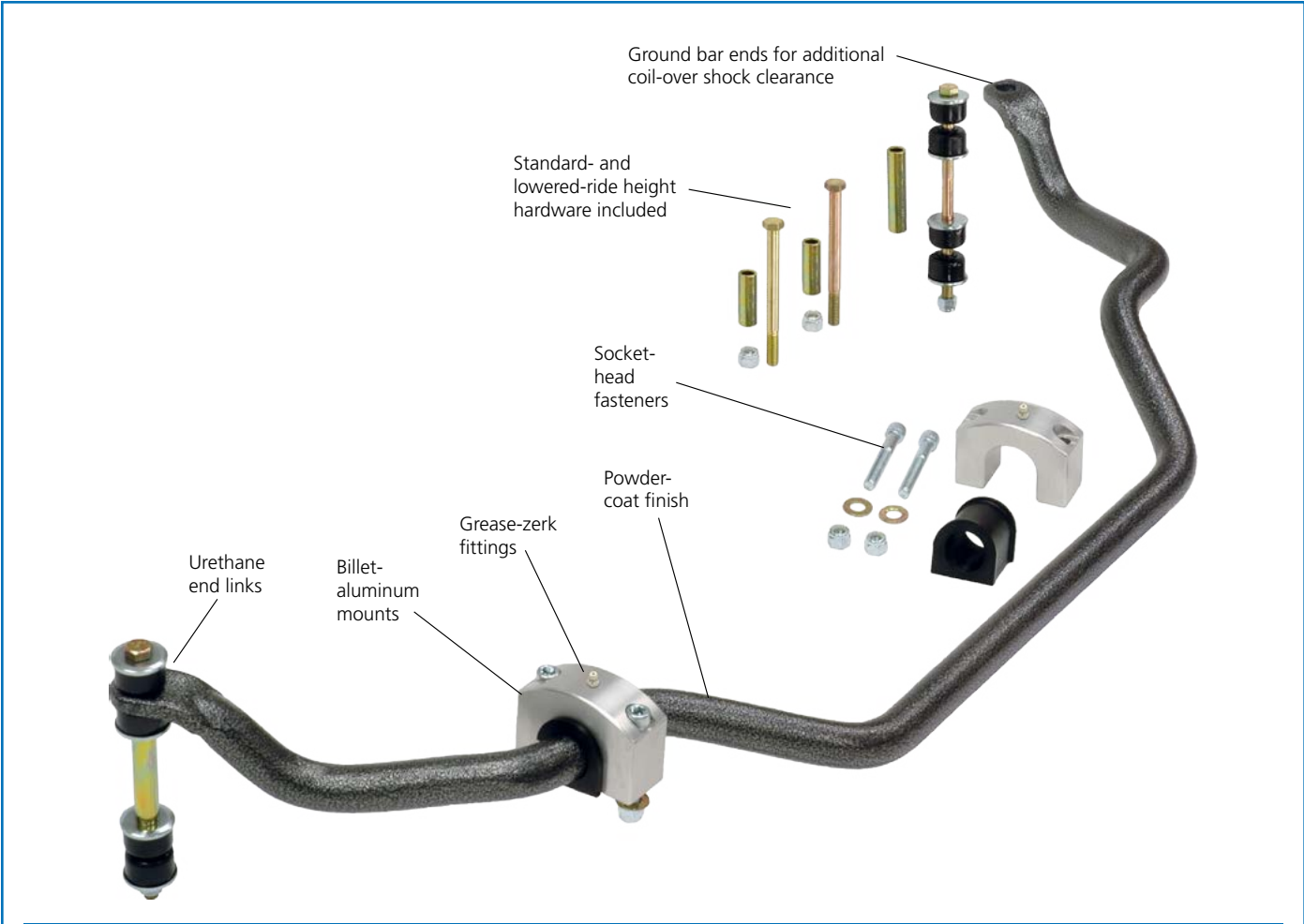




[CLICK for More Info Online](#)

Performance Upgrade Front Anti-Roll Bars for Vintage Mustangs and Other Fords



Front Anti-Roll Bars

Total Control Products produces the finest anti-roll bar for Classic Mustangs. This anti-roll bar was designed to minimize body roll for enhanced cornering performance. It's manufactured from heat treated alloy steel and then silver-with-black-vein powder coated for a lasting finish. The kit includes billet-aluminum, grease zerk equipped, chassis mounts with black polyurethane pivot bushings and endlinks. Complete hardware is included for a bolt-on installation. It can be used with stock ride height or lowered Mustangs by substituting hardware. For performance street use on small-block Mustangs we recommend the 1" bar. Increase to 1-1/8" bar for competition driving or for use with a big-block engine. Inch and a quarter (1-1/4") bars are for road course or autocross use only, and require use of a rear anti-roll bar for correct vehicle cornering balance.

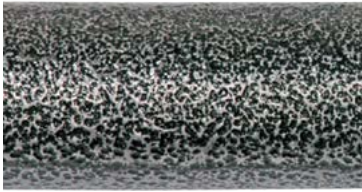
Billet Anti-Roll-Bar Mounts

Also available separately, replacement billet aluminum anti-roll-bar mounts are a quick, simple way to dress up your classic. Mounts feature socket-head hardware, easily accessible greasezerk, and are available with 1", 1-1/8", or 1-1/4" poly bushings. Clear-anodized satin finish; sold in pairs.



Part Number	Description
TCP ARBM-1.00	Billet aluminum mount 1" anti-roll bar (pair)
TCP ARBM-1.13	Billet aluminum mount 1-1/8" anti-roll bar (pair)
TCP ARBM-1.25	Billet aluminum mount 1-1/4" anti-roll bar (pair)

Anti-Roll Bar Sizes



1" Street Bar

Baseline rate for modern-handling classic automobile. Recommended for use with small-block engine applications seeing regular street use.



1-1/8" Street Performance

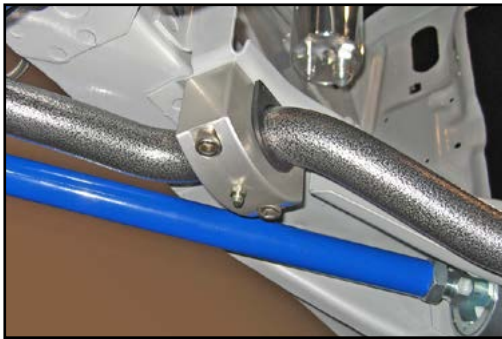
Offers a 60% increase in stiffness over our 1" bar. Recommended for use with small-block engine, competitive driving applications, and big-block street use.



1-1/4" Competition Bar

Offers a 52% increase in stiffness over our 1-1/8" bar. Recommended for competitive driving applications only. Requires use of rear anti-roll bar.

Model	Year	1" Street	1-1/8" Street Performance	1-1/4" Competition
Comet	1963-1965	TCP ARFM1-16	TCP ARFM1-18	TCP ARFM1-20
	1966-1970	TCP ARFM2-16	TCP ARFM2-18	TCP ARFM2-20
Cougar	1967-1970	TCP ARFM2-16	TCP ARFM2-18	TCP ARFM2-20
	1971-1973	TCP ARFM3-16	TCP ARFM3-18	-
Fairlane	1966-1969	TCP ARFM2-16	TCP ARFM2-18	TCP ARFM2-20
	1970-1971	TCP ARFM3-16	TCP ARFM3-18	-
Falcon	1963-1965	TCP ARFM1-16	TCP ARFM1-18	TCP ARFM1-20
	1966-1970	TCP ARFM2-16	TCP ARFM2-18	TCP ARFM2-20
Montego	1968-1969	TCP ARFM2-16	TCP ARFM2-18	TCP ARFM2-20
	1970-1971	TCP ARFM3-16	TCP ARFM3-18	-
Mustang	1964-1966	TCP ARFM1-16	TCP ARFM1-18	TCP ARFM1-20
	1967-1970	TCP ARFM2-16	TCP ARFM2-18	TCP ARFM2-20
	1971-1973	TCP ARFM3-16	TCP ARFM3-18	-
Ranchero	1966-1969	TCP ARFM2-16	TCP ARFM2-18	TCP ARFM2-20
	1970-1971	TCP ARFM3-16	TCP ARFM3-18	-
Torino	1966-1969	TCP ARFM2-16	TCP ARFM2-18	TCP ARFM2-20
	1970-1971	TCP ARFM3-16	TCP ARFM3-18	-



All prices subject to change. Current pricing available at www.totalcontrolproducts.com.



Total Control Products
8661 Younger Creek Drive – Sacramento, CA 95828
A Chris Alston's Chassisworks, Inc., Brand

Order: 800-722-2269
Tech: 916-388-0288
Fax: 916-388-0295

tcpsales@cachassisworks.com
tcptech@cachassisworks.com
www.totalcontrolproducts.com