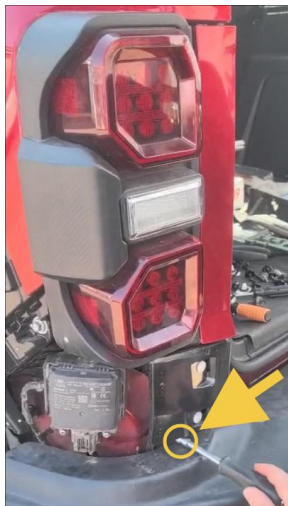




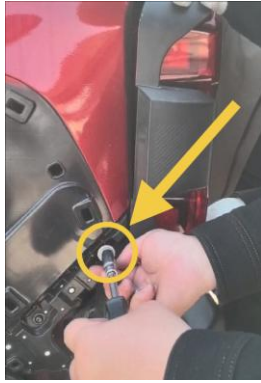
1. Remove the six screws, and then remove the rubber.



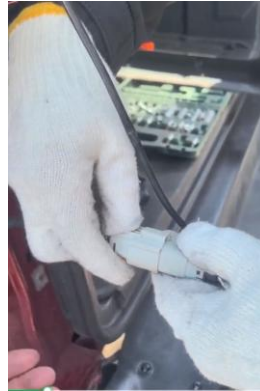
2. Remove the panel.



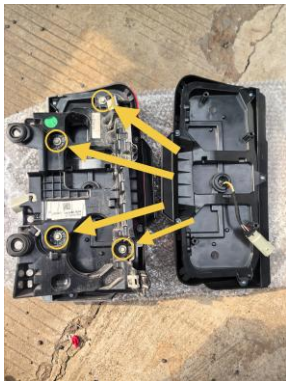
3. Remove screw and then remove panel



4.Remove the three screws.



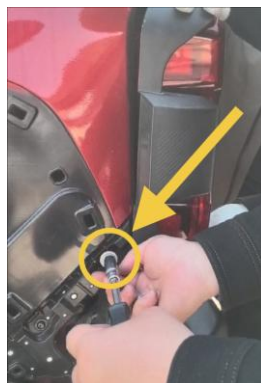
5.Slide the red plastic tab in the direction of the arrow, and then disconnect the wire harness.



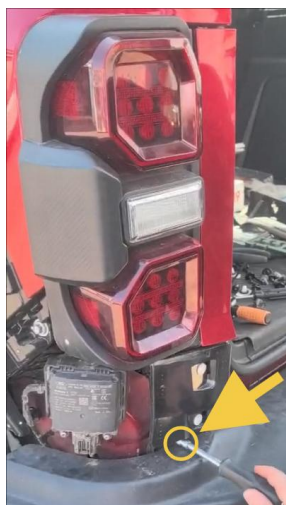
6.Remove these four screws and then put the bracket onto the taillight,then tighten the screws.



7. Connect the wire harness and then slide the red plastic tab in the direction of the arrow.



8. Tighten these three screws.



9. Install the panel by aligning the tabs and tighten the screw.



10. Install the panel.