

X4

POWER FLASH



QUICK START GUIDE



powered by **DERIVE**

(407) 774-2447 / www.sctflash.com

SECTION 1:

PARTS + CHECKLIST

X4 DEVICE



MICRO USB™ CABLE



HDMI/OBD II CABLE



TOOLS NEEDED:

Fuse Puller | Voltage Tester | Battery Charger | Pliers

SECTION 2:

PRE-INSTALL CHECKLIST

BUSINESS HOURS

Technical Support is available Monday – Friday between the hours of 9am and 6pm EST and can be contacted via phone at **(407) 774-2447** or through live chat at www.sctflash.com. If you need to contact Tech Support, please be sure to have your device with you before initiating contact.

INTERNET ACCESS

In the unlikely event that technical support is needed, Internet access may be required to troubleshoot. Our Technical Support team may also need to remotely connect to your computer to fix any issues you may be having.

ALLOW TIME FOR INITIAL SETUP

Make sure you have at least an hour to complete the initial setup, update, and installation process.

READ X4 USER MANUAL

SCT highly recommends taking a moment to read through your X4 User's Manual found on our website before installation. There is a lot of in depth but useful information inside the manual that won't be covered in this Quick Start Guide.

This device is not legal for sale or use in California on pollution controlled vehicles.

SECTION 3:

IMPORTANT ON-DEVICE INFO.

From the **Main Menu**, select **Device Info**.



Within **Device Info**, you will find :

SERIAL NUMBER:

Needed for dealers to create custom tunes for your vehicle and device.

FIRMWARE VERSION:

This is essentially your device's operating system.

TUNE REVISION

The version number of your preloaded tunes.

UNLOCKS LEFT:

Number of unlocks remaining. An unlock is used when the tuned vehicle is returned to stock and a different vehicle is programmed.

MARRIED STATUS:

Unmarried = Unlocked and ready for vehicle pairing.

Married = Locked to a vehicle.

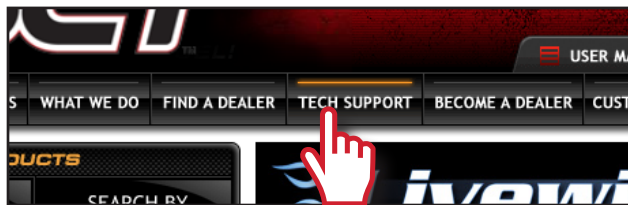
SECTION 4:

UPDATING YOUR X4 DEVICE

INSTALLING THE UPDATE SOFTWARE

NOTE: Make sure the X4 is unplugged from your computer before starting this process.

1. Go to www.sctflash.com



2. Click **“Tech Support”** tab at the top of the page.
3. Click the picture of the **X4** (Part Number 7015/7416).

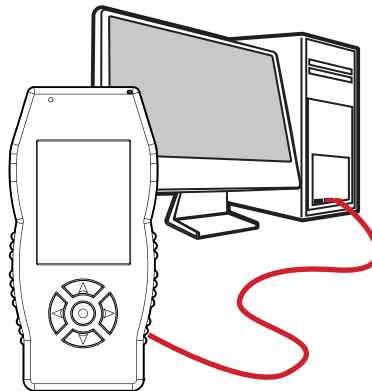
4. Click the **“Download Now”** button to the left of the listing that reads “SCT X4 Power Flash Programmer Device Update Software. Wait for that program to download, then double click and “Run” the **SCTDeviceUpdater.exe** file if it does not open automatically.



5. Follow the on-screen directions of the **SCT Device Update Software Installer** until it allows you to click “Finish”.
6. Follow the on-screen directions of the **SCTDrivers Installer** until it allows you to click **“Finish”**.
7. Your SCT Device Update Software and Drivers are now fully installed and ready for use.

UPDATING YOUR X4 DEVICE

1. Connect your X4 Device to your Windows™ based PC using the **provided Micro USB™ cable**. Unfortunately, we do not offer support for Apple computers at this time.



2. Double click and open the **SCT Device Update Software**.
3. Click **“Automatically Check for Updates”**.
4. Confirm the update by pressing the **“Update”** button. The update will now begin.
5. Let the updater run until it says **“Your device is now up to date!”**
6. You may now unplug your device from your computer and load a tune to your vehicle!

SECTION 5: READING VEHICLE VIN & STRATEGY/OS PART#'S

MAIN MENU
PROGRAM VEHICLE
GAUGES / DATALOG
VEHICLE DIAGNOSTICS
VEHICLE INFO
DEVICE INFO
DEVICE SETTINGS

From the **Main Menu**, select **Vehicle Info**.

You'll be asked to turn the **key on**. The VIN and if a Ford vehicle/device, it will give you the Strategy. If using a GM vehicle/device, it will give you the OS Part Numbers.

SECTION 6: CHECKING/CLEARING VEHICLE TROUBLE CODES

From the **Main Menu**, select **Vehicle Diagnostics**.

Within this menu, you will be given the option to read or clear DTC codes. Make your selection and follow the on-screen prompts.

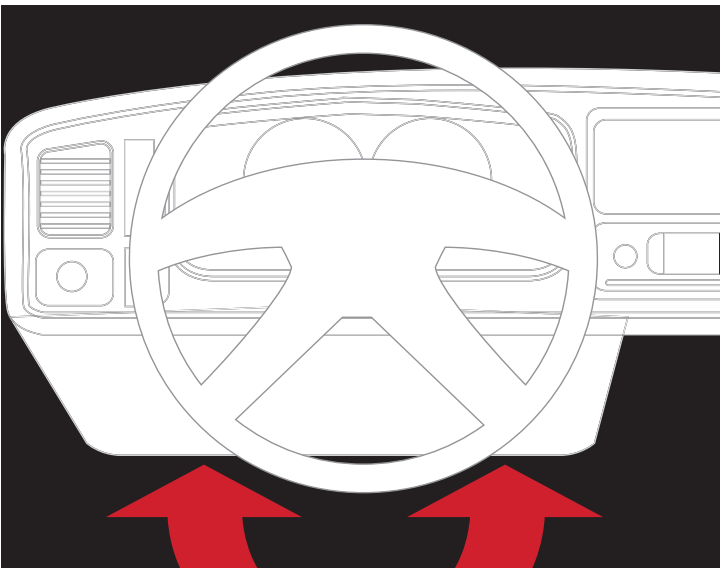
MAIN MENU
PROGRAM VEHICLE
GAUGES / DATALOG
VEHICLE DIAGNOSTICS
VEHICLE INFO 
DEVICE INFO
DEVICE SETTINGS

SECTION 7:

PROGRAMMING THE VEHICLE

POWERING ON THE X4

To power up your device, using the provided **HDMI to OBDII cable**, connect to the vehicle's OBDII port. The OBDII port is most commonly found within 24" of the steering column under the driver's side dash.

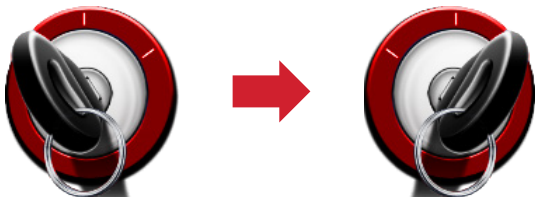


BEGIN PROGRAMMING

1. From the **Main Menu**, select **Program Vehicle**.
2. At this point, the key should be in the ignition, but in the **OFF** position until prompted to turn key **ON**.

Within **Program Vehicle**, there are 2-3 selections depending on the state of the vehicle.

MAIN MENU
PROGRAM VEHICLE
GAUGES / DATALOG
VEHICLE DIAGNOSTICS
VEHICLE INFO
DEVICE INFO
DEVICE SETTINGS



- **Pre-Loaded Tune Files** = Preloaded SCT tunes for use on stock vehicles only.
- **Custom Tune** = Custom Tuning Dealer files, if there are any on the device.
- **Return to Stock** = Restore original factory file to vehicle.

USING PRE-LOADED TUNE FILES

Once you follow the first “**Key On**” prompt, the device will show you a selection of vehicles and engine sizes. Select yours here. This will take you to Adjustable Options where you will be able to adjust to different performance levels, vehicle characteristics, and options including, but not limited to, speed limiters, axle ratio and tire size. (Adjustable Options are vehicle specific. For more information on Adjustable Options, please see the **Adjustable Options Explained** section of this guide.)

USING CUSTOM TUNES

To install Custom Tunes, select Program Vehicle, and scroll down to the Custom Tunes section. If your device contains any custom tunes for your vehicle, this is where they will be listed. Once you’ve found your desired tune select it by pressing on it and follow the on-screen instructions to load the tune to your vehicle.

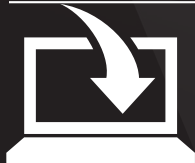
CONFIGURATION	
<input type="checkbox"/>	FORD DIESEL 6.4L
<input type="checkbox"/>	FORD DIESEL 6.7L
<input type="checkbox"/>	FORD DIESEL 6.0L & 7.3L
<input type="checkbox"/>	FORD GAS '07 & PRIOR YEARS
<input checked="" type="checkbox"/>	FORD GAS '08 & NEWER
<input type="checkbox"/>	FORD NON-US '11 & PRIOR
EXIT	CONTINUE

NOTE: Custom Tunes are built by SCT’s network of Custom Tuning Dealers and any questions related to them need to be directed toward the tuning dealer.

RETURNING TO STOCK

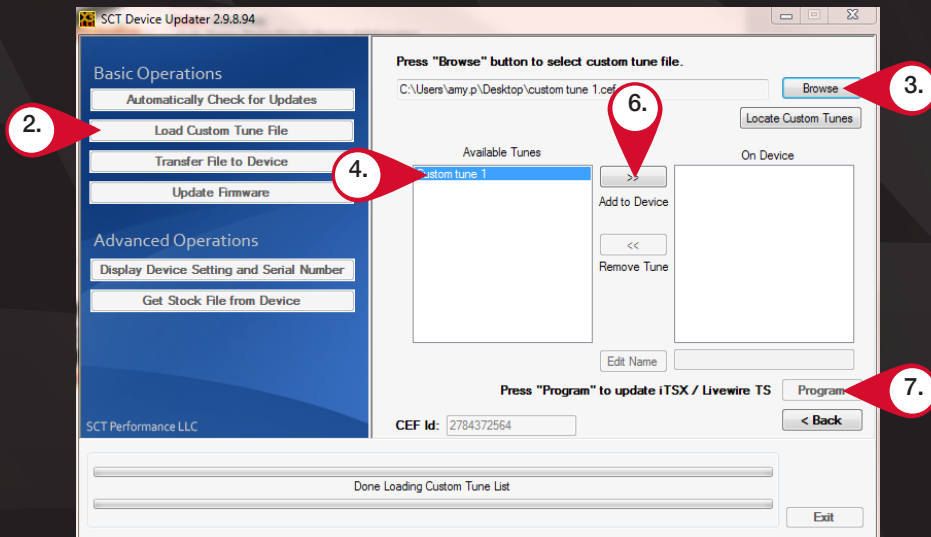
With SCT devices, your stock file is stored during the initial programming. The stock file stays on the programmer until returned to stock. From Program Vehicle, select Return to Stock and follow the on-screen instructions to advance through the programming process.

SECTION 8: LOADING CUSTOM TUNES



Download and install the **SCT Device Updater** software and Drivers from :
<http://sctflash.com/software/SCTDeviceUpdater.exe>

1. From your e-mail, **save your custom tunes** (.cef files) to your computer's Desktop.
2. Open the **SCT Device Updater** software and click the **Load Custom Tune File** button.
3. Click Browse and locate your custom tunes on your Desktop. Alternatively, click **Locate Custom Tunes**.
4. Select the Tune you wish to load.
5. The tune you selected should move to the **Available Tunes** section.
6. Select the listed tune in the Available Tunes section, then click the >> button to **move the selected tune** to the **On Device** section.



NOTE: To edit the name of the file as it appears on your device, you must select the file while it's in the On Device section, type in the desired name in the box below, and click Save.

7. Once you have gotten all the tunes you'd like to program under the On Device section and they're named to your liking, just click **Program**, and the Device Updater will load the tunes to your device.

SECTION 9:

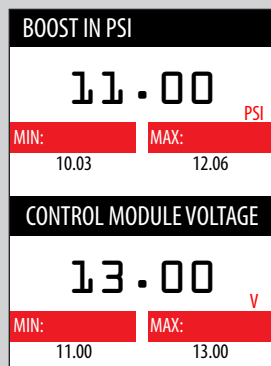
ON-DEVICE DATA LOGGING

NOTE: If you can't display a specific value from the preloaded config files, you can download Livelink software for free from the SCT website

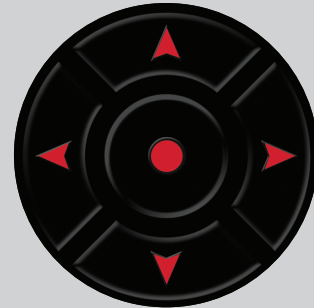
1. Connect the X4 to the OBDII port.
2. From the **Main Menu**, scroll to **Gauges/Datalog** and press the center button on the X4.
3. On **initial setup**, you will need to move to **Configuration**, press the **center button**, and **select your vehicle** from a list of data log files. In the future, you can continue without going through the vehicle selection.



4. Once you select your vehicle, **default gauges** will show up and you can now monitor these gauges.



5. The items being monitored can be adjusted by pressing up or down on the device to highlight and then pressing the center button on the X4 to select which reading you'd like to change. Within this menu, you can change the item you're monitoring, and the units in which it will be displaying.
6. To start or stop data logging, **press the center button** on the X4 while monitoring the gauges.



7. While monitoring, **press right or left on the device** to go to the Gauges/Datalog menu. From this menu, you may start recording, select a data log file with which to log, change the gauge layout, and reset the min/max values on the monitor.

SECTION 10:

ADJUSTABLE OPTIONS EXPLAINED

DIESEL VEHICLE SPECIFIC OPTIONS

Performance

The most aggressive preloaded diesel tune. Good for everyday use, racing, or economy but not recommended for any type of towing.

Street

Less power than Performance. Moderate gain over stock, safe for light towing, under 5,000 lbs.

Towing

Should be used when towing any significant load. Shifting is towing centered.

Trans Only

For Heavy Loads. Engine and boost left stock. Trans Only tune.

Jake Brake

Exhaust brake to increase engine braking while coasting. Lowers brake temps.

Locked at CT

Keeps the torque converter locked during deceleration to aid in engine braking.

Lock In 1-2-3

Locks the torque converter in 1st, 2nd and 3rd gear.

Agg. Tow Haul

More aggressive shift schedule keeping the engine in its power band longer.

NOTE: Adjustable Options vary for each vehicle and are not available on all vehicles

DIESEL & GAS VEHICLE OPTIONS:

Axle Ratio

Sets axle ratio to correct shift patterns/speedo. (Not available on all vehicles)

Tire Size

Sets tire size to correct shift patterns/speedo. (Not available on all vehicles)

Idle Speed

Sets idle speed in RPM.

Traction Control

On/Off setting disables traction control without using the TCS button.

WOT Shift

Increase or Decrease the WOT Shift points of each gear individually by MPH.

Shift Pressure

% change in transmission pressure during shifts.

(+ = Firmer, - = Softer)

GAS VEHICLE SPECIFIC OPTIONS:

Tune Type

Performance levels vary by the octane you select. Higher octane will provide higher performance increase. 93 octane would be the highest increase.

Towing Tune

Adjusts the octane based tunes to focus more on towing over performance.

Economy Tune

Adjusts the octane based tunes to focus more on economy over performance.

Rear O2s

Disables the rear O2s and eliminated the CEL caused by rear O2 removal.

Global Spark

Add or remove timing advance to the entire RPM range.

Spark by RPM

Add or remove timing by RPM range. (0-2000) (2000-4000) (4000-8000)

WOT Fuel

Add or remove fuel at wide open throttle. (WOT)

Fuel Injectors

Allows you to adjust for different sized injectors. (Not available on all vehicles)

GAS VEHICLE SPECIFIC OPTIONS:

CMCV Deletes

Updates tune to handle the CMCV/IMRC delete plates modification.

Fan Control

Lowers the temperature at which the fan turns on.

Rev Limiter Drive

Sets rev limit in RPM while in drive.

Rev Limiter Neutral

Sets rev limit in RPM while in neutral.

Speed Limit

remove, increase, or decrease the vehicle speed limiter.
(AKA Governor)

